



# KILKHAMPTON PARISH NEWS

[www.kilkhampston.news](http://www.kilkhampston.news)

JUNE 2026

*Please note:*

*for Tuesday 2nd June & Thursday the 4th June only,  
Kilkhampston post office opening hours (in the Spar)  
will be reduced to 0900 – 1230*

*Inside this issue...*

*Page 2 Church services*

*Page 3 Editorial and general information*

*Page 4 Floodlighting plus wise words from Rev Richard and Albert*

*Page 5 A plea for help with teas at the fete, update on the post office, a reminder about the Japanese open garden in Bridgerule from the last issue, and the usual coffee and cakes and Kilk lunch notices*

*Page 6-7 Tree book group report plus Kilk Krafts meetings reports*

*Page 8-9 Council meeting report*

*Page 9 Kilk Krafts June meetings, Stratton Hospital Fete notice and Stay & Play*

*Page 10 Kilkhampston school report and photos*

*Page 11 Bude Look Group report*

*...hopefully there's something for everyone!!*

**A quick reminder - St James Church Flower Festival 2026**

**14th, 15th & 16th August**

**This year's theme is 'Cornwall My Home'**

If you would like to provide or sponsor an arrangement, please contact

Jennie 01288321319, Heather 01288321336, or message on facebook

Please come along and support our Flower Festival – we look forward to seeing you

In colour online at [www.kilkhampston.news](http://www.kilkhampston.news)

# Kilkhampton Churches and Services

## *St James The Great, Kilkhampton*

<b>Priest-in-Charge:</b>	Reverend Teresa Folland	01288 352599
<b>Churchwarden &amp; Organist:</b>	Mr. Luke Francis BEM	01288 321 270
<b>Churchwarden:</b>	Mr. Kevin McGrath	01288 321 277
<b>Treasurer:</b>	Mr. Peter Hobbs	01288 321 551
<b>Captain of the Tower:</b>	Mr. Tony Davis	01288 321 292
<b>Flower Co-ordinator:</b>	Mrs Jeanette Normal	01288 321 404
<b>Sexton:</b>	Mr Alan Hockin	01288 321 710

---

### Sunday 7th June – Trinity 1 (Green)

11am Holy Communion with Reverend Douglas  
Welcomers: Myra and Tracey. Reading: Hosea 5:15-6:6. Ian

### Sunday 14th June – Trinity 2 (Green)

11am Morning Worship with Hilbre  
Welcomers: Rachel and Jules. Reading: Exodus 19: 2-8a. Peter

### Sunday 21st June – Trinity 3 (Green)

11am Holy Communion with Reverend Jane  
Welcomers: Rita and Jennie. Reading: Jeremiah 20: 7-13. Kevin

### Sunday 28th June – Trinity 4 (Green)

11am Morning Worship with Ian  
Welcomers: Margaret and Lynn. Reading: Jeremiah 28: 5-9. Hilbre

**If anyone is unable to make their appointed date please arrange a replacement**

**Daily Morning Prayer: 9am** Everyone welcome to drop in on any day

ZOOM Meeting ID 818 0754 3068 Password 342 493 Telephone 02030512874 or 02030515237

---

## ***Kilkhampton Methodist Chapel***

### ***MORNING SERVICE 11AM***

**Church stewards:** Mr. John Brooks, Killarney Park, Youlstone EX23 9PX  
Fiona Cleave, Higher Pigsdon Farm, Launcells EX23 9LQ  
Roland Nancekivell

**Room Bookings:** Contact Fiona Cleave on 01288 321261

---

<u>Date</u>	<u>Preacher</u>	<u>Flowers</u>	<u>Coffee</u>
7th June	Mrs. Chris Forster	Sue Joyner	Sue Joyner
14th June	Rev. Meg Slingo	Susan Beswetherick	Joy Moore
21st June	Rev. Richard Ward-Smith	Joy Moore	Sue & John Brooks
28th June	Mr. Barry Bryne	Brenda Dunstan	Marlene Bath

## EDITORIAL



Hi everyone, welcome to another edition of Kilkhampton Parish News!

I'm writing this a bit early as we're going on a road trip in our van – technically (I think!) it's a motorhome because it has a toilet and shower, but to me it's a van in terms of a sliding side door, opening back doors etc – like a delivery van! Anyway, we will be home again around the time you're reading this.

Our plan is to travel up to the Scottish borders – beautiful fells, sort of mountainous but also relatively barren. My husband used to have a share in a rented cottage there – 4 people paid £400 each a year to use it whenever they liked, obviously by arrangement with the other 3! It felt rather basic – it had running water and electricity, but a bath with no shower, no heating, no television, telephone or wi-fi, and very basic furniture. Mike's family had been going for years when I met him, and in our first year together we managed to stay there 3 times – once at Easter, once over the summer holidays and then finally for a few days over Christmas. It was the year

of the Boxing Day tsunami in Indonesia – which we didn't know about until we got home a few days later.

The cottage was tied to a farm, so sadly the rental came to an end when the farm needed it for their workers. We will be visiting places very close to the cottage, then travelling up to Fife in Scotland, before coming down the east coast to Whitley Bay at half-term (grand-children visiting!). Then a bit of a cross-country journey visiting relatives along the way, and home in time to edit the July edition of the Parish News.

We're also hoping to have a few weeks in north western France before the school holidays start, although I know our holidays don't always tie in with theirs. Our very old cat Starsky died in March, aged 21½, very sad but we now have a bit more freedom to take some longer trips. I no longer feel like travelling the world – not sure I ever did! – so France is a good option, but I also think our own British isles are so beautiful, we always love exploring places we haven't been to as well as visiting regular haunts. Campsites in Cornwall are great too, and not so far to drive of course.

I hope you all have some lovely holiday plans this year, even if it's day trips it can be good to get the holiday feeling!

Until next time...

Jill

### ST JAMES CHURCH FLOODLIGHTING SPONSORSHIP

Please clearly write or type your notices for the church floodlighting page, put them in an envelope with the £5 fee, and give them in at the Spar by the 11th of each month.

If you have any queries, please contact Tracey Smith at [kilkchurchlights@gmail.com](mailto:kilkchurchlights@gmail.com)

or phone her on 321432 or 07740 520459

Cheques should be made payable to 'KILKHAMPTON PCC'.

### Grenville Rooms

**Room bookings: contact Alan or Tracey Hockin 07399 996720 or 01288 321710**

### Kilkhampton Parish News Editorial team

Please use the contact details below to enquire about anything related to advertising (Alan), or send in submissions for the editorial page (Jill). We are happy to be contacted in the first instance and we're happy to accept notices of events and news items. Adverts need to be submitted by 1st of the month for the following month, and editorial submissions by 12th of the month.

Martin Cross (chair) [martin@kilkhampton.news](mailto:martin@kilkhampton.news) 01288 321806 or 07484 147056

Jill Rodgers (editor) [jill@kilkhampton.news](mailto:jill@kilkhampton.news) 01288 321144 or 07747 006601

Alan Dickerson (advertising sales manager) [alan@kilkhampton.news](mailto:alan@kilkhampton.news) 01288 321801 or 07828 172356

The opinions expressed in this newsletter are not necessarily those of the editor. The editor cannot be held responsible for the content of any articles, notices or other submissions to this newsletter. The editor cannot guarantee inclusion of articles or notices submitted for publication, and the layout and size of all articles (unless paid for) is at the discretion of the editor.

## St James Church Floodlighting Sponsors June 2026

### REG CORNISH

Remembering Reg Cornish on his birthday 15th June,  
and his passing on Fathers Day 17th June 1990.

Always in our thoughts - and his music!

Stewart, Jean, Sheila, Paul, Annette, brother Alan and family xxx

### LEWIS BABB

Fathers Day wishes. You always were and still are a special Dad to us,  
and your grandchildren talk always of the good times spent with you.

They will pass that down the line. We miss you xx

Also remembering your Birthday on 24th June

With love from all your family xxx

### HAPPY JUNE BIRTHDAYS

Happy Birthday to my granddaughter Nikitta, and great grandson Oakley 5,  
Love Nann xxx Also our Rob on the 30th

*Church floodlighting sponsors: see information on page 3 of this newsletter*

### FROM REV RICHARD

Just recently I have been doing a lot of remembering. Many times in the Bible we are asked to remember what God has done for us... and so we should. But the other night, while my brain was uncluttering stuff, I woke up singing to myself a Sunday school hymn from when I was very small.

In its way it can be prayed on several levels.

Jesus said, our faith should be simple... change and become like little children...

Here is the hymn:

Glad that I live am I,  
That the sky is blue.  
Glad for the country lanes,  
And the fall of dew.  
After the rain the sun,  
After the sun the rain,  
This is the way of life,  
Since the world began.  
All that we need to do  
Be we high of low,  
Is to see that we grow,  
Nearer the sky.

Simplicity is the key

*Rev Richard 12: 5: 26*

### ALBERT'S MONTHLY MESSAGE

Hi everyone. Last month we looked at the positive and negative effect that words have on those around us. This month we are going to look at the things that we do!

James again says in chapter 1 v 22 "do not merely listen to the word and so deceive yourselves. Do what it says." Doing is an action. If someone says to you "please go and do something about whatever" it usually means that an action has to follow. Well, it does in my case! What we do is so important, because when what we do matches what we say it brings stability, confidence and security.

We get very annoyed when someone promises us something and we don't get it, even if it's a small thing. It taints our opinion of someone or an organisation in a negative way. It's why I love reading the gospels because Jesus was exactly what it says on the tin! What He said He did, and that's why we are still reading about Him two thousand plus years later.

In a world with so much uncertainty, when you don't know if what you are hearing or looking at is the truth, it is more important than ever that our actions match our words so at least what people see in us can be trusted.

If you say "how do I know what to say and how do I know what to do", read through the gospels because it's full of the truth. Then you will know what your actions need to be.

Every blessing to you all, *Albert Sloman, Pastor*

## FETE TEAS -

### PLEASE CAN YOU HELP?

CAKES, SANDWICHES, SAUSAGE  
ROLLS ETC  
NEEDED FOR  
KILKHAMPTON FETE TEAS

IF YOU CAN PROVIDE ANYTHING,  
PLEASE TAKE IT TO LAMB PARK  
PAVILION ON THE MORNING OF  
THE FETE, 19th JULY 2026

ALL CONTRIBUTIONS  
GRATEFULLY RECEIVED

For information, please ring Joyce on  
01288 321292,  
THANK YOU

## POST OFFICE UPDATE

Kilkhampton post office has been in the Spar since January of this year. I am impressed with the level of support – it is receiving an average of over 50 customers per session, and on one Tuesday we saw over 85 people using the post office services. These hours obviously suit the needs of customers very well, so thank you to all who are, and continuing to, use it.

There is currently no plan to change any of the arrangements in place as all is working well and the post office is busier week by week.

May I remind everyone we provide all post office services in Kilkhampton including vehicle tax, banking and postage, as well as cash withdrawals and cheque deposits. We also have driving licence and passport forms.

Tuesdays and Thursdays, 9am to 3pm,  
Thank you for your support

Head postmaster Luke Francis

**Please note:** For Tuesday 2nd & Thursday 4th June, the post office will be open for reduced hours, 0900 – 1230.

## Japanese Open Garden - a quick reminder

See the May edition for full details. The Japanese Garden in Bridgerule is open by arrangement from 1 June to 30 September, 7 days a week.

Admission £5, cash or credit card, children free, all proceeds go to charity

Contact Paul on 07711 564072 or email [ozoneeng@aol.com](mailto:ozoneeng@aol.com)

## KILK COMMUNITY LUNCH

Brought to you by Kilk Coffee & Cakes Team

2 COURSE HOT MEAL FOR £7

ON

Friday 26<sup>th</sup> June

At 12.30 pm

AT

THE GRENVILLE ROOMS

Limited numbers so please book  
to ensure a place  
contact 01288 321073



SATURDAY 6<sup>th</sup> June

10.30AM - 12.00 NOON at

METHODIST CHURCH HALL

A VERY WARM WELCOME TO ALL!

The Charity for June is Ark Angel Christian Bookshop

## TREE BOOK GROUP: MY FRIENDS by Fredrik Backman

Most people don't even notice them – three tiny figures sitting at the end of a long pier in the corner of one of the most famous paintings in the world. Most people think it's just a depiction of the sea. But Louisa, an aspiring artist herself, knows otherwise, and she is determined to find out the story of these three enigmatic figures.

Twenty-five years earlier, in a distant seaside town, a group of teenagers find refuge from their bruising home lives by spending long summer days on an abandoned pier, telling silly jokes, sharing secrets, and committing small acts of rebellion. These lost souls find in each other a reason to get up each morning, a reason to dream, a reason to love.

Out of that summer emerges a transcendent work of art, a painting that will unexpectedly be placed into eighteen-year-old Louisa's care. She embarks on a surprise-filled cross-country journey to learn how the painting came to be and to decide what to do with it. The closer she gets to the painting's

birthplace, the more nervous she becomes about what she'll find. Louisa is proof that happy endings don't always take the form we expect in this stunning testament to the transformative, timeless power of friendship and art.

The author has a gift for creating characters who feel so achingly human that you can't help rooting for them. 'My Friends' continues that tradition in a beautiful, funny, and deeply moving way.

Backman balances heartbreak with humour in a way few authors can. One moment you're laughing out loud at a sarcastic quip, and the next you're wiping away tears as these characters face the weight of broken homes, lost dreams, and the fragile hope of connection. The novel is bittersweet, but it never tips too far into despair – there's always a thread of love, resilience and beauty running through it.

Contact: derekflaxman@btinternet.com

## KILK KRAFTS REPORT

A session on learning to crochet had been requested by a few members, so on 8th April they were given the opportunity to have a go. Lorna, Yvonne, Deanna, Freda and Susanne, who could already crochet, were on hand to work with two to three members each. It was difficult for those who knew how to knit as it is the complete opposite for crocheting. When knitting, for a right handed person the wool is held and tension applied with the right hand needle. In crochet the wool is held in the opposite hand controlling the tension and the hook is held in the right hand to capture the yarn to make a stitch. Once this was mastered, some progress was made with the beginnings of a 'Granny Square'. Why is it called a Granny Square I hear you ask? We looked up Google's explanation (see page 9).



*A granny square*



*Above: some of the squares completed by the group*

*Right: some completed crochet items brought along as examples by Lorna, Deanna, Yvonne and Susanne*



*(Continued on page 9)*

**Why is a crocheted square called a granny square?**

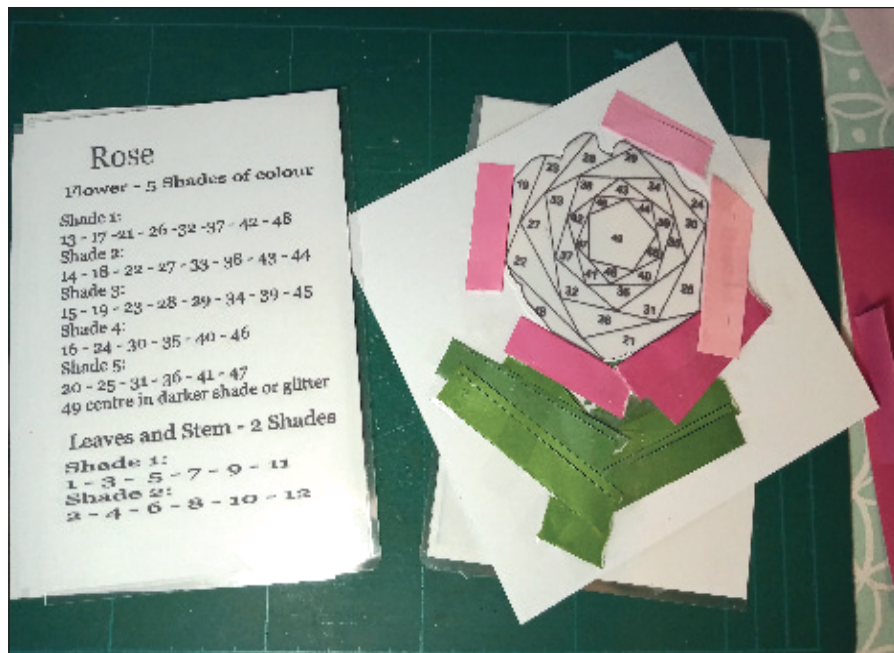
The term 'granny square' is derived from the traditional makers of these squares, often grandmothers or other older crochet enthusiasts. The simple stitch pattern and repetitive motions makes them easy to create without requiring perfect eyesight, which suited more experienced hands. Over time, the cosy association with grandma-style crochet stock and the nickname 'granny square' became the beloved term for this familiar motif.

Above: google's explanation of the name 'granny square'

The second meeting in April saw the return of the craft of Iris Folding Cards, first shown to the group four years ago, in February 2022. Members were given a choice of flower to complete, either rose, cornflower, snowdrop, buttercup, forget-me-not, poppy or un-named flower. Susanne supplied each member with a card and envelope, an aperture of their chosen flower, a template of where to place their paper strips, a colour chart showing what colours to use in different parts of the design, and coloured paper strips.



The rose aperture before starting to build the rose

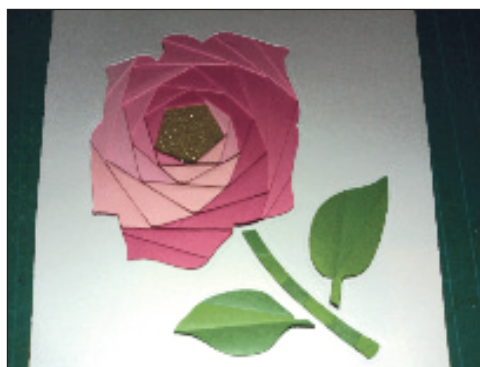


The rose template with a few colours added, and a colour chart

The aperture was fixed to the template, right side down, with reusable tape so that the lines and numbers for the strips of paper could be seen. Each strip of paper was allocated to the relevant colour shades and numbers. The paper strips were folded in half and measured against the template with enough over to allow adhesion to the aperture with sellotape or glue pen, following the colour chart in number order.



The back of a completed rose



...and the finished card!

Once completed, the remaining aperture was covered with either gold, silver or black glitter card. It looks a right mess on the back but the surprise comes when the aperture is removed from the template and turned over to show a lovely patterned flower. To complete the card, the back of the aperture has strips of double-sided foam placed around the edges before placing it in the middle of the card.

The rose shown above was made into a card and signed by all the members present to be given to Sylvia, who was unable to attend this meeting.

## **Kilhampton Parish Council**

Report of the regular meeting held on  
11th May 2026 [www.kilhampton-pc.gov.uk](http://www.kilhampton-pc.gov.uk)

**Attendance:** Kingsley Bryant (KB), Ian Heard (IH), Joanne Timmins (JT), Keith Ovenden (KO), Phil Sluggett (PS), Cornwall Cllr Faye Emery (FE).

**Apologies:** Reg Hambley (RH), Lee Bond (LB), Tim Cottle (TC), Vinnie James (VJ).

**Chairman:** Councillor Clive Vanstone

**Clerk:** Hannah Collett

Good evening to all by the Chairman.

**Minutes** Approved by all and to be signed by the Chairman at the end of the meeting.

**Adopt Code of Conduct**

**Declaration of Interest** None

**Public Speaking Session** No one here

**Planning Applications**

1. PA26/02206 16 April 2026 Demolition of vacant commercial buildings and proposed residential development of 5no dwellings Location Applicant Grid Ref Penstowe Manor Penstowe Park Kilhampton Bude Mr W Stone. The Chairman mentioned this is a 47page document. KB explained the situation and location of the plan. Discussed. Planning officer had been unwell so slightly delayed on decisions. Mentioned that it was a shame the facilities were no longer running. Nothing to refuse on. KB moved for approval and KO seconded. All in favour.

### **Matters**

1. Car park and toilets: £121.80 taken. TC not here regarding card payment options.

2. Open Space Funding: To be kept on the agenda. Have been awarded some funding. To be discussed in more detail at future meetings. JT mentioned she had looked into a half basketball court which could be covered by this. Thinking this may appeal to the older children in the village. The Chairman stated there is a basketball ring available that could possibly be put up to gauge the interest. KO said where the small football goals are used, gets very muddy. IH then asked if the area could become multi-use. JT and all felt yes.

3. Email Addresses: Webmail email to be set up by all. Email been resent to instruct how to do this.

4. Annual Accounts Approval 2025-2026: Available for viewing and approved by the Chairman and Clerk. Section one approval reference: 11052026/01. Section two approval reference 11052026/02. Conflict of interest confirmation reference 110526/HCCV

5. Other matters arising from the minutes: None

### **Reports**

Footpaths: IH said the first cut will be done by the end of the month. Nothing heard regarding the

bridges etc. FE heard nothing either and will chase again. Footpath been closed off with signage.

Playing fields and Lamb Park: IH mentioned the bin in the play area by the shelter is falling apart. Needs to be replaced. IH to look into and sort

School: LB not here

Grenville Rooms: RH not here. The Chairman still concerned about the failing wood discussed at the previous meeting. The Chairman reiterated the events. Worried there will be other buildings with similar structures and asked FE if something could be put onto the Cornwall Council monthly newsletter.

**Month's work** All Ok.

### **Members**

IH – Nothing

KO – Mentioned that the pole with the camera on had been pulled over. KO to sort. Also asked if the yellow lines were meant to be all the way to the Co-Op? No - per Chairman.

KB – Manhole now repaired. Nothing else heard on Aldercombe Lane. Email received about cleaning storm drain. The Chairman felt it was Highways that deal with this. Clerk to email FE for investigating on our behalf.

Email re: Thurdon and who owns section – not sure but Chairman and PS felt South West Water. Clerk to reply accordingly.

Congratulations to Kilhampton Football Club on winning the Cornwall Intermediate Cup.

Clerk to accept playpark inspection quotation per Chairman.

FE stated that Cormac have finally finished their works and the next step is for a road safety audit to be conducted. The Chairman mentioned the red crossing point and its dangers. PS said that a gentleman had recently fallen at this new section due to the slope and position etc. We have already expressed our concerns on this section. FE to explain to Cormac the issues we have and that have already been encountered.

FE been getting complaints regarding bus services in the area. There is an Engagement Day being held on the 19th June at the Strand and Crescent car park if anyone would like to attend.

FE stated that all Chairmen of Parish Councils have been invited to attend a meeting with MP Ben Maguire and Cllr Leigh Frost on 29th May in Bodmin.

North Cornwall CAP meeting is 8th June – Unfortunately JT is unavailable.

There is a Learn Cornish Podcast on BBC Sounds with a lady from Bude speaking.

FE mentioned she had a meeting with some of the residents of Blackberry Lane – works still not

*(Continued on page 9)*

(Council minutes, continued from page 8)

completed in full by Bunnyhomes. Will keep chasing them on our behalf. Disappointing that it's not finished – no safe place to cross the road and no pavement on the A39. The residents have asked about a bus stop – the Chairman said this was part of the original plan to be put in place (virtually opposite North Close). FE to check on this also.

Other concerns are on speeding traffic. Feel the traffic has become faster leading out of the village to the north due to the new give way system. Traffic is also bunching up. Speeding lorries are also a concern.

FE mentioned she had received an anonymous complaint on a breach of planning at Lower Tamar Lakes. Apparently a cabin with a septic tank is there without approval. Location shown. More than one there per Chairman. Felt it wasn't our Parish. FE to check on location again.

**Correspondence** None

**Finance** Read through by Chairman. Invoices to be paid: £118.00 Alan Somerfield; £72.00 Stephen Gifford; £5.95 Talk Talk; £287.36 BRC Heating and Plumbing. All in favour to be paid. Total balance before aforementioned payments £19,673.08.

Date of next meeting: 8th June 2026, 7.30pm, Grenville Rooms. Annual General Meeting followed by the regular Parish Council meeting.

Thanks to all by the Chairman. Declared the meeting closed.

## **KILK KRAFTS JUNE MEETINGS**

Wednesday 10 June

Cookery with Yvonne

Wednesday 24 June

Glass painting with Michelle Jardine

**Venue:**

*Methodist Chapel, Kilkhampton*

*Time: 2pm to 4.30pm*

*Cost: £2 per session plus small material costs as needed*

Any questions, contact:

Joyce (01288 321292)

Or

Lorna (01288 321706)

# STRATTON HOSPITAL FETE

NHS Stratton Community Hospital, Stratton, Bude EX23 9BR  
(To be held in the hospital car park)

## Saturday 20<sup>th</sup> June 2026

### at 2.00pm



**Raffle \* Tombola \* Cake Stall**  
**Bric-a-Brac \* Soft Toys**  
**Plant Stalls \* Hampers**  
**Fresh Flowers**

**Cream Teas & Sausage Sizzle available**  
**Featuring Stratton Bake Off**  
**Music by Seagals**



**In Aid of Stratton Hospital League of Friends**  
(Registered Charity No. 261031)

## Kilkhampton Stay and Play

**Thursday 11th & 25th June**

**9.30 am – 12 noon**

**Kilkhampton Methodist Church**

For children under 5  
and their parents,  
grandparents or carers

Please join us for  
tea/coffee and chat while  
the children play.

**ALL WELCOME**

For further information please call  
or message Fiona:

01288 321261 or 07854 141474

# KILKHAMPTON JUNIOR AND INFANTS SCHOOL

We are now well into the summer term and a lot has happened since I last wrote to you. Just before the Easter holidays, we held our annual talent show, 'Kilk's Got Talent,' on Red Nose Day. We raised more than £120 for the charity and had an entertaining afternoon watching a range of acts from gymnastics to dance, from magic to musical performances and more. The talent show was won by Louis in Reception, who performed a dance routine.

Since we have been back at school since Easter, the children in Years Three and Four have enjoyed a trip to Exmoor Zoo, where they met with zookeepers and had a tour of the school. Trips are being planned for other year groups for later in the term, and Year One and Two are having a visit from the 'Really Wild Experience,' where children will be able to get up close and see a range of animals in the school. Children in Year Six will also be going on a residential later this term.

Talking of Year Six, as I write this, they are sitting their Standard Assessment Tests (SATs). These are an assessment of the children in reading, maths and grammar, punctuation and spelling. The children have worked very hard all year, and we are ensuring that the tests are conducted in an appropriate manner, keeping the children calm and able to try their best. Writing at the end of Year Six is assessed through teacher assessment. The children will get their results before they break up for summer. Later in the term, children in Year One will be assessed in their phonetic knowledge, and children in Year Four will be assessed in their knowledge of times tables.



*Planting a tree to commemorate the 100th birthday of Sir David Attenborough*

As a school, we marked David Attenborough's centenary with some special assemblies as well as by planting a tree, which had been kindly donated by our PTA. Our eldest pupil, Emerson, and our youngest pupil, Wynter, planted the tree together in front of the whole school.



*Left and right: photos of our lovely new sensory garden*



We have been able to complete our sensory garden, a pleasant space off the field, where children can spend their lunchtimes if they want somewhere a bit quieter. This project has been completed thanks to the generosity of the PTA and their application to the East Langford Solar Farm for a grant towards the work. It is a lovely space and I would like to thank all who have been involved in making the project possible and in giving up time to plant planters and construct equipment.

We have also had another group of volunteers, this time from St James' church, who have started a gardening project with our pupils. They have started gardening weekly with a group of children from Year Six. I hope that as this project develops, more children across the school will have the chance to grow fruit and vegetables, which can be cooked in school or taken home. I would like to thank Rev Teresa and Amanda and their volunteers for enabling this to happen.

The summer term is a very busy term and there is still so much ahead, from school trips to residentials, sports days, summer fairs and visitors coming to the school.



We will be welcoming our children who will be joining the school in September and also saying goodbye to our Year Sixes who will be moving to the next phase of their education.

I look forward to updating you on all of this next month.

*Michael Watson  
Head Teacher*

## BUDE LOOK GROUP

Many in our group visited Exeter's RAMM museum to see the exhibition of Grayson Perry, so he became our focus of discussion for this month's meeting. Perry is an astute observer of humanity. He tackles subjects that are universally human such as identity, gender, or social status. You may have seen him on Channel 4 "Grayson Perry Sees the Future," still available on catch-up, where he is exploring Silicon Valley to investigate the impact of AI on people. This has become the latest focus of his work.

He is a skilled master of a range of media. In Exeter we saw wood cuts, huge tapestries, etchings, and pottery.



*Aspects of Myself 2001*

In the past, rich people decorated their homes with tapestries of battles or mythical heroes. Perry begins with that idea but his tapestries at Exeter tell contemporary stories. At Exeter we saw the tale of Julie Cope. Perry wrote a ballad to accompany two huge tapestries that told her life story. They are full of detail showing Perry's skill in drawing, use of glowing colour and complex composition. Julie is given heroic status. She represents all women, her modest beginnings, her rise in social standing, her mistakes and successes and her final demise. Here is Julie with her first husband, Dave.

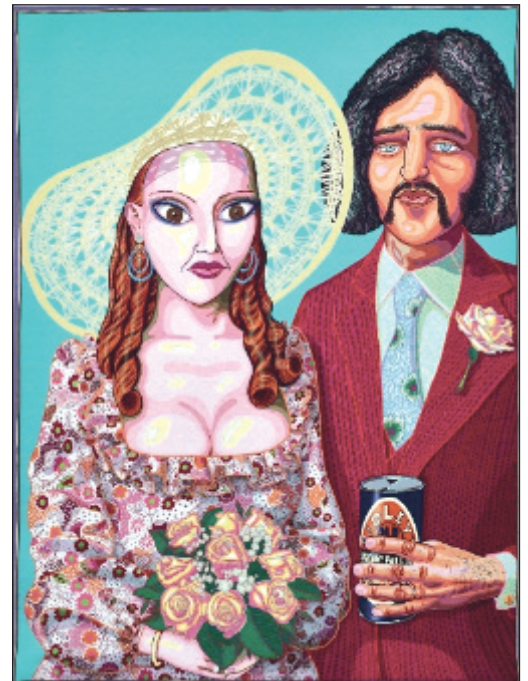
Julie is a tool for a wider conversation about social mobility, personal identities. Perry says "I investigate our slippery sense of who we feel we are... the ongoing process of being ourselves."



*The Honourable Millicent Wallace  
(blue/green) 2025 Woodcut*

In 2003, Perry was the first ceramic artist to win the Turner Prize and in doing so finally ended the idea that "craft" was inferior to "art."

Perry likes to look to the past and reinterpret art to represent contemporary issues. For example, he likes to coil clay to make pots in the Grecian style, but instead of conveying tales of gods, he uses the surface to illustrate aspects of his own troubled childhood.



Bude Look Group meets once a month at the Parkhouse Centre, Bude.  
Contact [chris.edwards39@btinternet.com](mailto:chris.edwards39@btinternet.com)