



# KILKHAMPTON PARISH NEWS

[www.kilkhampton.news](http://www.kilkhampton.news)

MAY 2026

## *Welcome to this issue!*

*We have a few less features this month - including no school report, which is sadly missed out through us not thinking ahead enough before the Easter Holidays! But we do have this month's football fixtures which were somehow missed out last month, I'm not quite sure how. And it's interesting to note that the notice about visiting a Japanese-style garden is followed on the next page by this month's Tree Book Group report on 'Four Seasons in Japan'!*

*Please keep your stories and notices coming in, and enjoy this issue!*

### *Inside this issue...*

- Page 2 Services for St James and the Methodist Chapel, plus a new list of contacts for St James Church*
- Page 3 Editorial - anyone interested in contributing a recipe or two? Plus an invitation from Upper Tamar Lake Sailing Club*
- Page 4 Floodlighting page, plus a reminder of the Flower Festival details*
- Page 5 Rev Richard and Albert share their thoughts, plus we have the May football fixtures*
- Page 6 Fete news, including the line-up of bands for both the Friday and Saturday. Also Stay and Play, and Kilk Community Lunch*
- Page 7 An Open Japanese Garden for you to visit in Bridgerule, plus the Coffee & Cakes notice*
- Page 8 Tree Book Group report*
- Pages 8-9 Kilk Krafts reports - plus a few quiz questions for you to try out - and the details of Kilk Krafts' May meetings*
- Pages 10-11 Kilkhampton Parish Council report*
- Page 12 Bude Look Group*

In colour online at [www.kilkhampton.news](http://www.kilkhampton.news)

# Kilkhampston Churches and Services

## ***St James The Great, Kilkhampston***

<b>Priest-in-Charge:</b>	Reverend Teresa Folland	01288 352599
<b>Churchwarden &amp; Organist:</b>	Mr. Luke Francis BEM	01288 321 270
<b>Churchwarden:</b>	Mr. Kevin McGrath	01288 321 277
<b>Treasurer:</b>	Mr. Peter Hobbs	01288 321 551
<b>Captain of the Tower:</b>	Mr. Tony Davis	01288 321 292
<b>Flower Co-ordinator:</b>	Mrs Jeanette Normal	01288 321 404
<b>Sexton:</b>	Mr Alan Hockin	01288 321 710

---

**Sunday 3rd May – Easter 5 (White)** 11am Holy Communion with Reverend Jane  
Welcomers: Jules and Tracey. Reading: Acts 7: 55-end. Kevin

**Sunday 10th May – Easter 6 (White)** 11am Morning Worship with Hilbre  
Welcomers: Rachel and Rita. Reading: Acts 17: 22-31. Tony

**Thursday 14th May** 6pm Ascension Day Service with Reverend Teresa  
Welcomers: To be arranged

**Sunday 17th May – Easter 7, Sunday after Ascension Day (White)**  
11am Holy Communion with Reverend Douglas  
Welcomers: Jennie and Joyce. Reading: Acts 1: 6-14. Hilbre

**Sunday 24th May – Pentecost (Red)** 11am Morning Worship with Ian  
Welcomers: Margaret and Lynn. Reading: Acts 2: 1-21. Gillian

**Sunday 31st May** 10.30am (**Note Time**) BENEFICE SERVICE AT LAUNCELLS  
With Reverend(s) Jane and Teresa

**If anyone is unable to make their appointed date please arrange a replacement**

**Daily Morning Prayer: 9am** Everyone welcome to drop in on any day

ZOOM Meeting ID 818 0754 3068 Password 342 493 Telephone 02030512874 or 02030515237

---

## ***Kilkhampston Methodist Chapel***

### ***MORNING SERVICE 11AM***

**Church stewards:** Mr. John Brooks, Killarney Park, Youlstone EX23 9PX  
Fiona Cleave, Higher Pigsdon Farm, Launcells EX23 9LQ  
Roland Nancekivell

**Room Bookings:** Contact Fiona Cleave on 01288 321261

---

	<b><u>Preacher</u></b>	<b><u>Flowers</u></b>	<b><u>Coffee</u></b>
3rd May	Deacon Ruth Ritchey	Fiona Cleave	Monica Heywood
10th May	Rev. Richard Ward-Smith	Joy Moore	Roger & Brenda Dunstan
17th May	Rev. Joy Wilson	Vivienne Hunt	Fiona Cleave
24th May	Circuit Service at Bude		
31st May	Local Arrangement	Sue Brooks	Judith Heard

## EDITORIAL



Dydh da, pubonan! Hello everyone!

Sunshine and showers - what an April, I can't believe how fast everything in the garden is growing! It feels as though the growth of the plants has been slow so far this year - maybe because of the cold weather we have had - but they're making up for it now!

A quick shout-out to all fans of the Parish News. Lucy Stevens has helped to bring back our recipe corner - now 'The Parish Pantry', a name Lucy came up with which I think is lovely! I have received many nice comments about her recipes, but she is not able to produce a recipe each month.

Our idea of bringing the feature back was to involve readers in providing recipes, but the printing problems took over and it fell by the wayside.

So what do you think? Could some of you produce recipes that you would be happy to share? My one

criteria is that it should not be a recipe copied from a book, website or magazine - it needs to be original. I know lots of you cook or bake for village functions - please share your favourite family recipes! If we can build up a small collection to keep us going, we can try and use them seasonally. Thank you in anticipation!

See you next month,

Jill



### Upper Tamar Lake Sailing Club

Our 2026 racing season is starting, and we are keen to welcome new members, experienced or not. Club boats are available for members if you don't have your own, or you can crew for other club members.

We sail on Sundays and also some Wednesdays.

*Come and join us and find out more!*

Our website: [www.utlsc.org.uk](http://www.utlsc.org.uk)

or email us: [contact.utlsc@gmail.com](mailto:contact.utlsc@gmail.com)

### ST JAMES CHURCH FLOODLIGHTING SPONSORSHIP

Please clearly write or type your notices for the church floodlighting page, put them in an envelope with the £5 fee, and give them in at the Spar by the 11th of each month.

If you have any queries, please contact Tracey Smith at [kilkchurchlights@gmail.com](mailto:kilkchurchlights@gmail.com)

or phone her on 321432 or 07740 520459

Cheques should be made payable to 'KILKHAMPTON PCC'.

### Grenville Rooms

**Room bookings: contact Alan or Tracey Hockin 07399 996720 or 01288 321710**

### Kilkhampston Parish News Editorial team

Please use the contact details below to enquire about anything related to advertising (Alan), or send in submissions for the editorial page (Jill). We are happy to be contacted in the first instance and we're happy to accept notices of events and news items. Adverts need to be submitted by 1st of the month for the following month, and editorial submissions by 12th of the month.

Martin Cross (chair) [martin@kilkhampston.news](mailto:martin@kilkhampston.news) 01288 321806 or 07484 147056

Jill Rodgers (editor) [jill@kilkhampston.news](mailto:jill@kilkhampston.news) 01288 321144 or 07747 006601

Alan Dickerson (advertising sales manager) [alan@kilkhampston.news](mailto:alan@kilkhampston.news) 01288 321801 or 07828 172356

The opinions expressed in this newsletter are not necessarily those of the editor. The editor cannot be held responsible for the content of any articles, notices or other submissions to this newsletter. The editor cannot guarantee inclusion of articles or notices submitted for publication, and the layout and size of all articles (unless paid for) is at the discretion of the editor.

## **St James Church Floodlighting Sponsors May 2026**

### **EDITH MARY CLEAVE**

Peace to the memory of Mum, called home 21st May 2018.  
'There is a link death cannot sever, love and remembrance live forever.'  
John

### **SYLVIA CORNISH**

Remembering with so much love our Mum Sylvia Cornish who  
passed away on 29th May 2007.  
A wonderful Mum, Nan and Great Nan, and friend to many. Always in our thoughts.  
Stewart, Jean, Sheila, Paul, Annette and family. Xxx

### **GWYN STONE**

May 10th 2017  
Remembering Gwyn with much love.  
Greatly missed by Ann and all the family.  
Always in our thoughts.

### **BABB**

Remembering 2 special girls, Joanne and Sharon who  
passed on 4th May 35 years ago.  
Never forgotten.  
Ann, John, Beryl and all the family xxx

### **May Birthdays**

Thinking of Bry on the 30th xx  
Dear Gracie May 10th xx  
Happy Birthday to Beryl 17th May xx  
& Sydney 31st May xx

### **RUTH & LEW BABB**

Thinking of you both on what would have been your 75th wedding anniversary,  
14th May. Love from all of us xxx God Bless.

*Church floodlighting sponsors: see information on page 3 of this newsletter*

## **St James Church Flower Festival 2026**

***14th, 15th & 16th August***

**This year's theme is 'Cornwall My Home'**

If you would like to provide or sponsor an arrangement, please contact  
Jennie 01288321319, Heather 01288321336, or message on facebook  
Please come along and support our Flower Festival – we look forward to seeing you

## FROM REV RICHARD

Sometimes one may feel that the world is a very grim place. Where there are things going on which fill us with horror. Similarly, when things are not going our way we can become rather sour-faced and doleful. While recognising this and working towards alleviating it where we can, we need to hold in balance that there is another side. One of joy and laughter which so often cheers the spirit. To be plain – we need to laugh. Laugh at the daily comedy which is all around.

Most laughter is good, and humour is linked with the ability to see things at a different angle. It enables us to accept the unpalatable and the unconventional things and realise that we are just mortals. Laughter is healing too. For finding humour in our struggles doesn't mean to say that we don't take them seriously. Laughter: well, it lifts the spirits.

I reckon that the test of a good religion is whether or not you can joke about it. I don't see Jesus as he is portrayed in those soppy Victorian paintings. I imagine a smiling Jesus, a laughing Jesus. Someone

who might play jokes on his friends. Jesus had a real sense of humour, telling stories about hypocrites and pompous men. I bet he laughed at himself too. Perhaps when he tripped over or got lost on one of his walkabouts, or even got a bit tipsy at a party. Did he ever have a cough or an injury? I am sure that he did. That is exactly why he was so drawn to heal the sick and disabled.

Jesus must also have revelled in God the Creator's sense of fun. Why else would he have made so many funny-looking creatures?

We don't need a laughter club in Kilk – we just need to encourage one another to laugh, long and loud.

*I would like to take this opportunity to thank everyone who sent happy birthday wishes. It was very humbling and yet another reminder, as if I needed one, that this Kilk village is the very best place to call home. We have been mightily blessed.*

*Rev Richard, March 10th 2026*

## ALBERT'S MONTHLY MESSAGE

Words are amazing! They have immense power. They have the power to build or the power to destroy. It's why James wrote in chapter one (James 1:19):

*My dear brothers and sisters, take note of this! Everyone should be quick to listen, slow to speak and slow to become angry.*

I like James, he tells it straight!

The old saying "Sticks and stones may break my bones but words will never harm me" is the biggest load of rubbish ever.

- Wars have started with words.
- Family feuds have started with words.
- Marriages have ended because of words.
- Children have left home because of words.
- People have found themselves depressed because of words.



Words have the power to destroy but they also have the power to heal and build. You won't believe this but I can get things wrong! I know, unbelievable, isn't it! But I can, and a really good friend once said to me that the twelve most difficult words to say are:

*I am sorry  
Please forgive me  
I was wrong  
I will change*

When those words are said with sincerity they are the twelve most constructive and healing words.

So let's have a month of constructive and uplifting and positive and healing words for May, and why not take it into the rest of our lives.

Every blessing to you all,  
Albert Sloman, Pastor.

	<b>SUPPORT KILKHAMPTON FOOTBALL CLUB!</b> <i>See below for the May fixtures for the Men's 1st team</i>	
<b><u>Date</u></b>	<b><u>Time</u></b>	<b><u>Teams</u></b>
2nd May	2.30 pm	Kilk Mens 1st v Foxhole Stars
9th May	2.30 pm	Kilk Mens 1st v Sticker

## **KILKHAMPTON FETE AND MUSIC WEEKEND 2026**

**24th & 25th July**

**Friday 24th July from 6.30pm**

Live music 6.30pm till midnight, with bar and food vendors

8-10pm Clotted Cream — 10pm-midnight Treme

**Saturday 25th July from 2pm**

Crowning of Fete Royalty

FREE Bouncy Castle and Face painting, craft stalls

Afternoon hog roast from 3pm, bar and food all day

Live music: 4-6pm Smokey Mountain Boy — 6-8pm Jewell

8-10pm Two Day Hangover — 10pm-midnight The Water Rats

*Volunteers needed to run the bar for both Friday evening and*

*Saturday afternoon/evening. Details nearer the time.*

*Any donations of raffle prizes would be much appreciated.*

*Please contact Jennie on 01288 321319 or 07421 454839*

*if you can help. Thank You*

### **Kilkhampton Stay and Play**

Kilkhampton Methodist Church

**Thursday 14th & 28th May**

**9.30 am – 12 noon**

For the under 5s with their parents, grandparents or carers  
Please join us for tea/coffee and chat while the children play.

**ALL WELCOME**

For further information please call or message Fiona on 01288 321261 or 07854 141474



### **KILK COMMUNITY LUNCH**

Brought to you by Kilk Coffee & Cakes Team

**2 COURSE HOT MEAL FOR £7**

ON

**Friday 29<sup>th</sup> May**

At 12.30 pm

AT

**THE GRENVILLE ROOMS**

Limited numbers so please book to ensure a place  
contact 01288 321073

## Japanese Open Garden

Paul Rutherford's Japanese-style garden in Bridgerule is open by arrangement 1st June - 30th September, as part of the National Garden Scheme ([ngs.org.uk](http://ngs.org.uk)). Last year, the garden raised around £500 for cancer research, and Paul is hoping that visitors' generosity will help him raise even more this year. His garden is number 74 in the Devon section of the NGS website.



Paul, the owner of the garden, has spent many years in Japan, and in 2021 started to build a typical Japanese-style garden in Bridgerule.

Japanese nihon teien gardens are traditional gardens whose designs have Japanese aesthetics and philosophical ideas which highlight the natural landscape. Plants, plus worn, aged materials are used to suggest a natural landscape, and to express the fragility of existence as well as time's unstoppable advance.

This Japanese-style gravel garden has trees, shrubs, rocks, a moss garden, herbs, a fish pond and several water features.

*'beauty in imperfection'*

*Nothing lasts, nothing is finished, and nothing is perfect*

There is also a Torii gate, a Shinto shrine, several Japanese stone lanterns, a granite bridge, a Japanese garden grill, and two timber patios, one of which is raised and looks over the river Tamar.

The garden design is based on the concept of wabi-sabi, which is centred around the acceptance of imperfection and the beauty of transience. This concept is reflected in the use of natural materials, including weathered rocks and aged wood, which create a sense of impermanence and authenticity.



To visit, contact Paul on 07711 564072 or email [ozoneeng@aol.com](mailto:ozoneeng@aol.com)

Open by arrangement 7 days a week, ideally groups of up to 8 people

Admission £5, cash or credit card, children free

All proceeds go to charity

*Tamar House, Bridgerule EX22 7EJ*

*Opposite the Bridge Inn*

*What3Words: somewhere.hotspots.tank*



**SATURDAY 2<sup>nd</sup> May**

**10.30AM - 12.00 NOON at**

**METHODIST CHURCH HALL**

**A VERY WARM WELCOME TO ALL!**

**The Charity for May is Make a Wish**

S  
T  
A  
L  
L  
S

S  
T  
A  
L  
L  
S

## TREE BOOK GROUP: FOUR SEASONS IN JAPAN by Nick Bradley

Four Seasons in Japan is an intimate look at life in contemporary Japan, as seen by both locals and outsiders. It's a gently-paced book that takes place over the course of a year, as the title suggests. It highlights the differences between city and rural life and contrasts traditional culture and attitudes with modern ways. The author, Nick Bradley, has lived in Japan for many years, and it shows. He is able to highlight things that are of interest to readers who are new to Japan while writing authentically about his characters and his cats! There's some fun word play and well-rounded characters, with suspense maintained until the end. The book includes delightful line drawings and calligraphy, which add to the experience.

Flo Dunthorpe is an American translator living in Tokyo, who is at a crisis point in her life. Her work has dried up and so has her relationship with her girlfriend, Yuki. She is a gloomy character when we meet her, but she has loyal friends who believe in her, which is cause for optimism. She needs to find work and to decide whether to follow Yuki to New York or stay put. Fate conspires to put a novel in her path, *Sound of Water* by Hibiki. Flo becomes engrossed with the story of Kyo and his grandmother, Ayako. She begins translating the book and we read what she has written, so *Four Seasons in Japan* becomes a meta novel – a book within a book. Flo is desperate to ensure her editor will like her translation of *Sound of Water* – but can she find Hibiki, the mysterious Japanese author, and get permission to publish it in English?

Bradley divides *Four Seasons in Japan* into sections according to the seasons that Kyo and Ayako experience in *Sound of Water*, which mirror those that Flo is living through as she translates their story. Kyo has failed his exams and become a "roninsei": he attends a cram school in order to retake and go on to the career in medicine that his family wants for him. Meanwhile, he must live with his grandmother, who he barely knows. He is tormented by the death of his father when he was a baby – as is Ayako, who is strict and traditional and determined not to let her grandson down in the way she feels she let her son down. She secretly admires Kyo's skill as an artist but both characters are so repressed that they don't show their true emotions. Kyo's dilemma is whether to fulfil his family's expectations or follow his heart and become an artist.

Locations are vital to the book. Kyo becomes attached to life outside Tokyo, and it becomes apparent that the mountains and water are more than just part of the scenery; they've played an important part in the story of his family. Kyo is the respectful grandson, meaning that he won't ask questions of his taciturn grandmother, and their shared history is only gradually revealed. You'll want to keep reading to discover how Flo, Ayako and Kyo change over the course of the four seasons and whether they achieve their respective aims.

DOROTHY FLAXMAN  
(contact derekflaxman@btinternet.com)

## KILK KRAFTS REPORT

On 11th March, we made spring wreaths with Sally Strong.

Sally spent many hours before the meeting cutting materials into 2 inch squares with pinking shears – more laborious than ordinary scissors – as you can see from the first photo. Each pile contained about 50 squares. We were asked to pick 3 piles of material and were given a polystyrene doughnut ring and half a wooden skewer with the point cut off, as in photo 2.



Photo 1: 2 inch squares to choose from



Photo 2: polystyrene doughnut ring, half a wooden skewer and selected squares

(Continued on page 9)

*(Kilk Krafts, continued from page 8)*

We then had to take a square of material, find the middle of the right side and push this into the polystyrene ring with the wooden skewer. This was repeated in circles until the whole of the top and sides of the ring were covered – see photo 3. Although some of us used the same material squares, every ring turned out differently, and everyone enjoyed this new craft. The final photo shows Sally with most of the completed wreaths.



*One of the completed wreaths*



*Sally with the completed wreaths*

The second meeting in March was a quiz, with questions set by Sandra & Bob Langley. There were five teams of six, with 10 questions in each round: gardening, 60s & 70s pop music, general knowledge, and animals. A joker could be played on one of these subjects earning double points. Each team was also given two A4 sheets of 30 questions on “All things British” to work through. See if you can work out the answers of some of the questions:

- (1) Who did Margaret Thatcher succeed as prime minister in 1979?
- (2) What is the name of the current 10 Downing Street resident cat?
- (3) On what date of the year is St. George’s Day?
- (4) UK postage stamps are different to any other stamps in the world as they do not bear what?
- (5) On which British coin in common use would you find “The Prince of Wales’ Feathers”?
- (6) Who was the last British female tennis player to win the ladies singles title at Wimbledon?
- (7) The Cornish flag, black background with a white cross, is properly named after which Saint?

*(Answers at the bottom of the page)*

Out of a possible 80 points the winners were ‘Vintage 6’ with 71 points, with a prize of an Easter egg each. They were followed by ‘Famous 6’ with 63 points, ‘The Natterers’ with 60 points, ‘Sylvia’s 6’ with 59 points, and finally ‘The Misfits’ with 57½ points. Thanks were expressed to Sandra and Bob for an enjoyable and informative afternoon.

## **KILK KRAFTS MAY MEETINGS**

Wednesday 13 May

History of cutlery talk - Christine March  
*Bring your old cutlery for Christine to see!*

Wednesday 27 May

Collage workshop - Barbara Littlejohns

*Venue:*

*Methodist Chapel, Kilkhampton*

*Time: 2pm to 4.30pm*

*Cost: £2 per session plus small material costs as needed*

Any questions, contact:

Joyce (01288 321292)

Or Lorna (01288 321706)

*Quiz question answers: 1. James Callaghan 2. Larry 3. 23rd April 4. Name of the country 5. 2p coin 6. Virginia Wade 7. St. Piran*

## **Kilkhampton Parish Council**

Report of the regular meeting held on 13 April 2026

[www.kilkhampton-pc.gov.uk](http://www.kilkhampton-pc.gov.uk)

**Attendance:** Kingsley Bryant (KB), Reg Hambley (RH), Ian Heard (IH), Joanne Timmins (JT), Keith Ovenden (KO), Lee Bond (LB), Tim Cottle (TC), Cornwall Cllr Faye Emery (FE).

**Apologies:** Phil Sluggett (PS), Vinnie James (VJ).

**Chairman:** Councillor Clive Vanstone

**Clerk:** Hannah Collett

Good evening to all by the Chairman.

**Minutes** Approved by all and to be signed by the Chairman at the end of the meeting.

### **Adopt Code of Conduct**

**Declaration of Interest** IH declared and interest in application n°1 PA26/01212 and the Chairman declared an interest in application n°2 PA26/01054.

### **Public Speaking Session**

Mr and Mrs Nanson here regarding their potential purchase of N°5 Blackberry Lane. They mentioned that their solicitor has questions about the completion of planning conditions which have not all been met by the original developers. They were hoping for possibly a contact for their Solicitor to be able to confer with the resolve their concerns. Mr Nanson stated their Solicitor is reluctant to speak to Bunnyhomes directly. FE mentioned she has a meeting on Wednesday regarding these issues. They haven't completed their planning. They need the official document. FE felt it wasn't the first property that has been sold independently. The Chairman also mentioned that to the north of the property is the new traffic calming system – which Bunnyhomes knew nothing about but it ultimately affects their scheme. The Chairman felt that Bunnyhomes will still deal with everything. FE took details from Mr and Mrs Nanson to try and sort some information out for them. Thanks to Parish Council and FE from Mr and Mrs Nanson. Thanks to Mr and Mrs Nanson for attending from the Chairman. Welcome to stay for the duration of the meeting.

### **Planning Applications**

IH left the room

1. PA26/01212 10 March 2026 Proposed self-build dwelling in lieu of Granted Permission in Principle application PA25/08066 Location Applicant Grid Ref Land At Lymsworthy Farm Kilkhampton Mr D Johnson. RH said in principal this has already been approved. This is for the details of the actual building. KO said it's a detached bungalow with a garage at the side. Nothing huge, single storey. KB didn't feel anything to refuse. Drawings shown and discussed. LB moved for approval, KB seconded. 5 in favour and 1 against.

IH re-entered the room. The Chairman left the room and the Vice Chairman took over the proceedings.

2. PA26/01054 16 March 2026 Phased development of 5 new dwellings and associated infrastructure on land South of Grenville Close, Kilkhampton Location Applicant Grid Ref Land South Of Grenville Close Kilkhampton Bude Cornwall Mr Michael Vanstone. Drawings shown and discussed in detail. RH talked through the history of this site. Planners had previously felt homes could be built on the area. The section next to it is also being built on, a road exists and it would round off that area. RH doesn't see anything to refuse, as others have built around the area. Not overlooking anything. JT asked where the infrastructure is for the village getting larger – for more children in schools, doctors available etc. RH said unfortunately the Government pushes for more homes to be built. FE mentioned that where there is a large development, there are fees in place per property that get given to schools etc. Anything under 10 houses doesn't have these fees implemented. TC felt it would be nice for some proper affordable housing for existing villagers to be able to purchase. LB moved for approval, IH seconded and all in favour. The Chairman re-entered the room and took back the proceedings.

3. PA26/01691 17 March 2026 Telecommunication prior notification for proposed upgrade of an existing base station comprising the removal of an existing 15.0m monopole and replacement with a 20m lattice mast supporting 2 no BTEE / H3G antennas, 1 no 600mm dish together with ancillary development thereto Location Applicant Grid Ref Existing Base Station Uk-Co-000172, Driving Range Ivy Leaf Farm Bude. RH stated that we had passed this application previously. Didn't feel it will affect anything. TC moved for approval and KB seconded. All in favour

4. PA26/01948 25 March 2026 Proposed two storey rear extension and alterations to dwelling. Location Applicant Grid Ref 13 Blackberry Lane Kilkhampton Bude Cornwall Mr and Mrs Thie. Drawings shown. KB said it's not a huge extension. Backs onto Morwenna Park. RH didn't feel it would make an issue. RH proposed and JT seconded. All in favour.

### **Matters**

1. Car park and Toilets: £99.00 taken. TC had previously spoken to Mr Somerfield. Cleaned everything as usual – cleared out blockages and then the next day it was blocked up with excessive toilet paper again. Parish Council stated how extremely lucky we were to have Mr Somerfield. LB asked if we could look into changing the way we dispense the toilet paper.

2. Email Addresses: The Clerk stated that all individual .gov.uk email addresses need to be set up and used as the only contact from the Parish Council emails. KB resending the original set up email to all again. The Chairman and Vice Chairman have theirs up and running.

*(Continued on page 11)*

### 3. Other matters arising from the minutes: None.

#### Reports

Footpaths: IH had received an email from the Ramblers Association stating a certain footpath had been closed for 20 years and they would like it to be open again. Sanctuary Lane to Kespit. Footpath numbers 515/10/4, 515/10/5 and 527/6/1. IH unsure from drawings whether it is on our definitive map, Chairman agreed. IH showed information to FE. FE asked if Cornwall Council know about it - email suggests they do and agree to it being opened up. FE to raise as a query with them. Cormac also in talks with Cornwall Council per the email and looks like it may be being dealt with. JT said that PS also mentioned the bridge by the Ford is in hand and being dealt with. FE said the other bridge previously discussed will be done by Cornwall Council. Will ask them again when they plan on sorting.

Playing fields and Lamb Park: The Chairman said we have been awarded a sum of Open Space Area funding to use for the playing fields. Chairman asked how we accept. Felt the Lamb Park Trust needs to be involved. On agenda for May meeting.

School: LB – Nothing to report. On half term currently.

Grenville Rooms: A section of the woodwork in the main hall fell off one of the arches. No-one injured, but could have been very dangerous. Some other sections are also loose. KO has tended to all as necessary. The Chairman had concerns about other halls with the same joists – should we email Cornwall Council as a precaution for others to be checked. Hall is 100 years old. Chairman forwarding information to FE.

**Month's work** All Ok.

#### Members

RH – had a phone call from a parishioner from the Old Post Office complaining cars now parking outside their entrance. RH feels we should push Highways now to finish the works. Cars don't stop for anyone crossing at the red area as they don't realise what it's for. TC felt there should also be a "new road layout" sign in place. KB felt strongly that we had been let down by Highways taking far too long to do what little they have and still not completed. Lady in the village had received a reply from Highways addressing her concerns as she cannot walk by the Spar safely with her walking frame due to the dropped curb and narrowness of the pavement. Has previously fallen on such an area by the hairdressers. This one now would cause her to fall into the A39. FE to write to Highways and express all concerns and disappointment. Cornwall Council trying a new product for repairing road surfaces. LB read from Town and Planners website 'Red Surface – Informal crossing point – No priority to pedestrians'.

KB – Aldercombe Lane still not been sorted. FE said they may need to install a new drain – FE to contact again on our behalf. Glyphosate to be re-introduced by Cornwall Council just along curbs and pavements to maintain the roads and prevent weeds.

TC, LB – Nothing

IH – Asked if the history room was up and running. Yes. Mr Hockin best to contact as has keys.

KO – Road works outside the village by Brentspool. Drain across the road but the water misses the drain, plus the water from the well is still running down the road. Explained to FE where the well was situated and the issues it causes. KO said it needs a pipe from the well straight to the drain.

JT – Mr Michael Heard went through Kilkhampton Common and through the woods. Said there is a fallen tree blocking the path. IH to look into this. JT also mentioned anti-social behaviour – a previous week there had been a group of youths in the churchyard drinking alcohol. One girl (14 years old) was virtually unconscious and so inebriated she was violently sick. Luckily for her there were people around to assist. Was a shock to come across someone so young in such a terrible, drunken state. The Mum was contacted and took her to hospital.

FE – Everything noted has been covered already.

The Chairman mentioned a letter received regarding lines to be done on the car park outside a property. RH to sort as we had agreed it was our responsibility to prevent anyone parking in this specific area.

Letter of thanks received from the Methodist Church.

The Chairman said we need to decide where we will be placing the new container. Lamb Park Trust to look into this. The trees we have discussed at Lamb Park need to be dealt with now the weather is better.

KO asked TC if we could actually get the card payments in place for the toilets. Still to look into.

The Chairman showed a picture on screen of Mars. Mr Peter Foden, previously grew up in Kilkhampton, works on a team that actually drives the Mars Rover – Mr Foden is involved in steering the Mars Lander for Bude. He had an opportunity to name a crater on Mars and called it Kilkhampton. A 17KM crater situated 15KM east of where they will be landing. Mr Foden has written published papers on Mars.

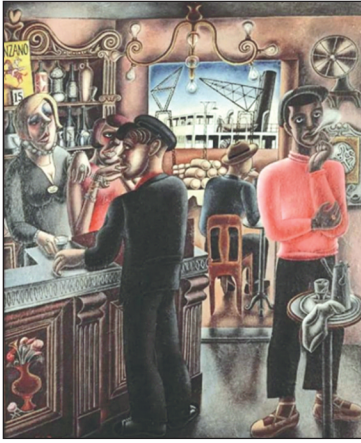
**Correspondence:** None

**Finance:** Read through by Chairman. Invoices to be paid: £118.00 Alan Somerfield; £108.00 Stephen Gifford; £5.95 Talk Talk; £645.92 CALC membership; £1,588.00 Zurich Insurance renewal; £61.00; K & J Building Services; £2,200.00 Kilk PCC (uncleared cheque). All in favour to be paid. Balance before aforementioned payments: £6,955.90.

Date of next general meeting: 11th May 2026, Grenville Rooms, 7.30pm.

Thanks to all by Chairman and meeting closed.

## BUDE LOOK GROUP



*Dockside Café,  
Marseilles 1929*

Last year, Tate Britain exhibited the work of Edward Burra (1905-1976), so our group chose him as the focus for our discussion this month. From early childhood Edward Burra suffered from rheumatoid arthritis and a blood disease that was so debilitating that he could not paint in oils nor stand at an easel, so watercolour became his chief medium. Burra lived in Rye all his life with his parents and, later, his sister. Nevertheless, he attended art college, made lifelong friends, and travelled widely, drawing inspiration from what he saw, particularly in France, Spain, and New York.

Like so many of the young set following WW1, Burra loved jazz, crowds, and exploring the seedier elements of society. He cast a very satirical, humorous eye on all he saw, sketching and storing experiences in his photographic memory. We enjoyed studying the characters in this dockside bar (*left*), especially the man in the pink jumper and ballet shoes standing in such a camp pose whilst thoughtfully smoking.

When civil war broke out in Spain and during wartime Britain, Burra's work became more sinister and darker. In 'Soldiers at Rye' (*right*), the soldiers have bird masks that hide their humanity, and the musculature of their bodies looks metallic and machine-like.



*Soldiers at Rye, 1941*



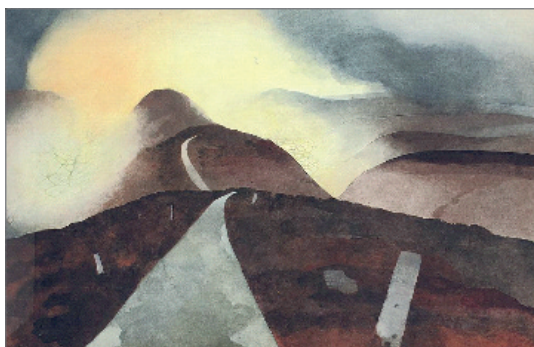
Design for the drop curtain: *The Nightmare*  
by Edward Burra, Don Quixote, Royal Ballet,  
Covent Garden, February 1950

Burra altered his style of painting according to what he wanted to communicate. There was no pressure to please buyers, and he was able to draw inspiration from a wide range of styles including cubism, surrealism and expressionism, which led to interesting discussion in our group. He was also a highly valued theatre designer and book illustrator.

By the early 70s, Burra's health was failing. No longer able to travel abroad, he was driven by his sister to numerous parts of the UK including Cornwall. The painting on the right is one of a series that expressed his concern about how the countryside was being ripped apart by motorways, mining, and industrial estates. In this painting what was once a beautiful view is half hidden by aggressive, roaring vehicles. In the distance a road with queues of traffic cuts across a hillside.



*An English Country Scene No 2 1970*



*Near Whitby, Yorkshire, 1972*

During this period Burra painted beautiful landscapes seen from his car, but some seem very mysterious and melancholy. In the painting on the left, the empty road is reaching towards a bank of fog, but are those stone blocks milestones or tombstones? It suggests that Burra feels his lifetime journey is ending.

Bude Look Group meets once a month at the  
Parkhouse Centre, Bude.

Contact [chris.edwards39@btinternet.com](mailto:chris.edwards39@btinternet.com)