

# KILKHAMPTON PARISH NEWS

[www.kilkhampton.news](http://www.kilkhampton.news)

FEBRUARY 2026

## WE'RE BACK IN PRINT!

*Oh, you had already noticed! Thank you to everyone who completed our survey in November - we received 115 replies, which was great - about 1/5 of the number of copies we deliver! We have managed to get back in print with the help of the Parish Council who purchased a replacement printer, which they will own and maintain. A big thank you to the council for helping us out in our hour of need, it is much appreciated.*

*Detailed information on the survey results and comments received will be in the March issue, and also on our website, once the write-up is complete (sorry, not quite yet!)*

## NEW GAMES CLUB IN KILK?

In my editorial in the October 2025 issue, I asked whether there was any interest in a games club in the village? Open to all, board games, cards or anything else! I only received one positive reply, but not everyone reads my editorial of course! I think a democratic group to run it would be needed, but if anyone is interested, please get in touch (my details are on page 3) and maybe all of us who are interested can meet up and see what we come up with?

Looking forward to hearing from you! *Jill*

### Inside this issue...

Page 2	Church services and contact details, Grenville Rooms bookings
Page 3	Editorial, notice about Parish News entries and contact details
Page 4	Church floodlighting plus wise words from Albert and Rev Richard
Page 5	Kilk Christmas Fayre thanks, a Candlemas reminder, pancakes, and Christmas Fayre dates for 2026
Page 6	Coffee and Cakes, Post Office news, Organ Recital in St James Church and Kilk football fixtures
Pages 7-8	Kilk Krafts reports from 2025
Page 8	Kilk Krafts February meetings, Community Lunch, Stay and Play and Bude Metric Band event
Pages 9-11	Kilk Council reports from December and January meetings
Page 11	Johnny Cowling concert tickets - last chance!
Pages 12-13	School report and photos
Page 14	Tree Book Group reports from December and January
Pages 15-16	Bude Look Group December and January meetings

IN COLOUR ONLINE AT [WWW.KILKHAMPTON.NEWS](http://WWW.KILKHAMPTON.NEWS)

# **Kilkhampton Churches and Services**

## ***St James The Great, Kilkhampton***

**Priest-in-Charge:** Reverend Teresa Folland Teresa.folland@gmail.com 01288 352599  
**Churchwardens:** Mr. Kevin McGrath 01288 321277  
Mr. Luke Francis BEM 01288 321270

---

### **Services:**

#### **Sunday 1st February – Presentation of Christ in the Temple (Gold or White)**

11am Candlemas Holy Communion with Reverend Jane  
Welcomers: Margaret and Rita. Reading: Malachi 3:1-5. Ian

#### **Sunday 8th February – 2nd before Lent (Green)**

11am Morning Worship with Hilbre  
Welcomers: Jennie and Joyce. Reading: Genesis 1:1,2 and 3. Kevin

#### **Sunday 15th February – Sunday before Lent (Green)**

11am Holy Communion with Reverend Teresa  
Welcomers: Lynn and Myra. Reading: Exodus 24:12 to end. Tony

#### **Wednesday 18th February – Ash Wednesday 10.30am STRATTON Midweek Mass with Reverend Jane**

#### **Sunday 22nd February – 1st Sunday of Lent (Green)**

11am Morning Worship with Ian  
Welcomers: Tracey and Jules. Reading: Genesis 2:15-17, 3:1-7. Hilbre

**If anyone is unable to make their appointed date please arrange a replacement**

**Daily Morning Prayer: 9am** Everyone welcome to drop in on any day

ZOOM Meeting ID 818 0754 3068 Password 342 493 Telephone 02030512874 or 02030515237

---

## ***Kilkhampton Methodist Chapel***

**Church Stewards:** Mr. John Brooks Killarney Park, Youlstone EX23 9PX  
Fiona Cleave Higher Pigsdon Farm, Launcells EX23 9LQ  
Roland Nancekivell

**Room Bookings** Contact Fiona Cleave on 01288 321261

### **Morning Service 11am**

<b><u>Date</u></b>	<b><u>Preacher</u></b>	<b><u>Flowers</u></b>	<b><u>Coffee</u></b>
1 February	Mr. Barry Bryne	Sue Brooks	Monica Heywood
8 February	Rev. Richard Ward-Smith	Susan Beswetherick	Marlene Bath
15 February	Pastor Albert Sloman	Brenda Dunstan	Roger & Brenda Dunstan
22 February	Mrs. Ruth Bealing	Sue Joyner	Sandra Holmes

### ***Grenville Rooms***

**Room bookings: contact Alan or Tracey Hockin**

07399 996720 or 01288 321710

## EDITORIAL



Hi everyone!

At last, we're back in print! It's been a bit of a journey, but we're all so pleased to be able to produce and deliver copies once again. We received so many replies and comments from our survey, which was brilliant. We are very grateful to the Parish Council for stepping in.

I wanted to include the survey results in this issue, but have been a bit delayed in writing everything up. It is now almost complete, and I feel there were so many comments that are worth sharing with everyone – a real flavour of the support there is for the Parish News in both the printed and online format. So I will write this up and 'reserve myself' some space in the March issue to bring the write-up to you. It will also appear on the website once completed.

It's a busy issue this month, with double reports from some, plus a look ahead at events. So this is all the space I have this month – all your entries are much appreciated, hope you enjoy this month's issue and see you in March!

Jill

## Notices and adverts in the Parish News

Here's a quick reminder of what you can benefit from. *You can:*

- Advertise a fundraiser, charity event, craft fair or even just a birthday party, all free of charge.
- Send in articles, recipes or other information for us to include.
- Send in a thank you and/or report from events already held.
- Sign up to our facebook page so that we can notify you each time a new edition comes out.

*If you are a business, you can:*

Advertise at VERY reasonable rates – an annual cost, based on the size of your advert, to be included in all 10 issues produced each year.

We receive many positive comments, especially from new village residents, who use the advertising pages a lot and also welcome the opportunities it presents to get involved with village life.

*A couple of things you can't do:*

- Advertise your business for free – that would be unfair on our paying advertisers.
- Post on our facebook page - only the committee and team can do this – as again that would enable free advertising.

... but that's all!!

**SO DON'T FORGET – IT'S YOUR PARISH NEWS – USE IT!**

Send any queries to me (Jill), contact details below.

### ST JAMES CHURCH FLOODLIGHTING SPONSORSHIP

Please clearly write or type your notices for the church floodlighting page, put them in an envelope with the £5 fee, and give them in at the Spar by the 11th of each month.

If you have any queries, please contact Tracey Smith at [kilkchurchlights@gmail.com](mailto:kilkchurchlights@gmail.com)

or phone her on 321432 or 07740 520459

Cheques should be made payable to 'KILKHAMPTON PCC'.

### Kilkhampton Parish News Editorial team

Please use the contact details below to enquire about anything related to advertising (Martin), or send in submissions for the editorial page (Jill). We are happy to be contacted in the first instance and we're happy to accept notices of events and news items. Adverts need to be submitted by 1st of the month for the following month, and editorial submissions by 12th of the month.

Martin Cross (Chair, sales and printing manager) [martin@kilkhampton.news](mailto:martin@kilkhampton.news)  
01288 321806 or 07484 147056

Jill Rodgers (editor and secretary) [jill@kilkhampton.news](mailto:jill@kilkhampton.news) 01288 321144 or  
07747 006601

The opinions expressed in this newsletter are not necessarily those of the editor. The editor cannot be held responsible for the content of any articles, notices or other submissions to this newsletter. The editor cannot guarantee inclusion of articles or notices submitted for publication, and the layout and size of all articles (unless paid for) is at the discretion of the editor.

## St James Church Floodlighting Sponsors February 2026

### GILBERT & VANSTONE

On the 41st Anniversary of the formation of their business  
on 16th February 1985. Always happy to support the floodlighting fund.

### TREVOR BELL

In loving memory of Trevor, who passed away February 5th 2004  
Always in our thoughts. All our love,  
Celia, Ann, Kevin, Anya & Lucy.

### ARTHUR HARRIGAN

Wedding Anniversary, 5th February 1955.  
Think of you every day. Miss you. Love Edith xx

*Church floodlighting sponsors: see information on page 3 of this newsletter*

### FROM REV RICHARD

Doors: They can be open or shut, swinging or revolving, ajar or locked, with a bell or with a knocker. They are something through which we go out or come in.

When open, the reception that we receive can be welcoming, enquiring, rejecting or simply slammed in our faces.

Recently in the Vatican, Pope Leo xiv closed the Holy Door. It is a special sealed entrance that is only opened during a Jubilee, a holy year, symbolising a spiritual passage from sin to grace. The next Jubilee year will be in 2033.

Many pilgrims have passed through this door and there is the hope that they will be able to better recognise a pilgrim in a visitor, a seeker in a stranger, a neighbour in a foreigner.

We all have doors of some sort, whether physically in our homes, or in our hearts through which we wish to travel, to begin again or to resolve to take a different path.

Holman Hunt, in a painting, depicted Christ preparing to knock on a door which lacks a handle. The nails are rusty and its hinges overgrown with ivy, showing that it is a long-unopened door. Furthermore, there is no latch and can therefore only be opened from the inside. For me, I think this represents an obstinately shut mind. But there are many other layers of meaning.

In our time, we all pass through many doors and hope to meet with kindness. Perhaps when we open them to others they may bring the grace that we were seeking.

*Rev Richard, 7 January 2026*

### ALBERT'S MONTHLY MESSAGE

I'm finding this more difficult to write than I had imagined. I'm sitting here perspiring as the temperature is sort of 27 to 30 degrees and I love it. It's the middle of summer here in Australia and all the kids are on their long school holidays, and you are all in the middle winter! But what I can tell you is that you very quickly forget what winter is like when you come out here, and it's not something you particularly want to come back to, but the reality is I have to because that is where God has placed me. That's where my family and friends are and more importantly, that's where God has called me.

Well, how about you? Do you live in the land of "I wish"? I wish I was somewhere else; I wish I was someone else; I wish I had another job; I wish I had a different family. The land of "I wish" means you will always be discontented with your lot. You see, when you know that God has called you to be where you are you have no need for the land of "I wish", as then you are content to serve God where you are in the best way you can and you are fulfilled in it.

I get people say to me "I'm just a wife and mother". I stop them right there because to be a wife and mother is one of the greatest calls of God that a person can have. Your home is a sanctuary, your children are totally untapped potential for God and our world. You are not just a... You are someone with a call of God on your life, and whether you see it or fully understand it does not change it! Isaiah 43 v 1 says "I have called you by name, you are mine." So why not investigate what God has for you?

May God bless you and keep you in the centre of His will.

Albert Sloman, Pastor.

## ***Kilkhampton Christmas Fayre – Thank You***

The Kilkhampton Christmas Fayre Committee would like to thank everyone who supported our village event on **Saturday 6th December 2025**. Despite the wind and rain, our Christmas spirits were not dampened and Santa arrived safely to hand out gifts to all the children.

The craft stalls were busy with festive shoppers, while we were once again entertained by Bude ukulele band “**All at C**” and **Bude Metric Band**, who both filled the evening with Christmas music and carols. Children enjoyed decorating baubles and gingerbread men and were delighted by the balloon man’s creations. The rodeo reindeer proved very popular with older children and adults, although the wind meant the inflatable snow globe could not be used. Hot dogs and burgers, mince pies, mulled wine and other hot refreshments were especially welcome on such a cold evening.

The Fayre is run entirely by volunteers and aims to provide Christmas cheer for the whole community without making it too expensive for families. As a non-profit group, any money raised will be reinvested into next year’s fayre, which will take place on **Saturday 5th December 2026**. We would like to thank everyone who helped in any way — decorating the Grenville Rooms, erecting and dismantling marquees, helping on the night, and of course all the children who make Christmas so special.

We were also delighted to receive grant funding from **East Langford Solar Farm**, which supported both the Fayre and the Christmas light that shone so brightly at the southern entrance to the village. We are very grateful to all the light sponsors for their generosity and hope, if space allows, to add another light to the north of the village in the future. Once again, thank you to everyone who supported the Kilkhampton Christmas Fayre, and we look forward to seeing you all at our

***2026 Christmas Fayre, Saturday 5th December***

### ***ST JAMES THE GREAT CANDLEMAS LUNCH***

**GRENVILLE ROOMS  
SUNDAY 1st FEBRUARY 2026**

**12.30 for 1pm**

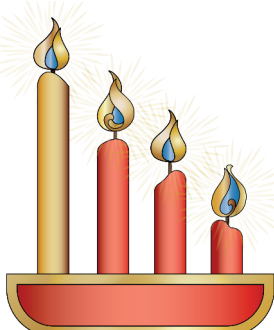
**Roast Beef**

**Home made Puddings**

**Cheese and Biscuits**

**Tea or Coffee**

**£13.50**



**Please book  
with Joyce  
01288 321292**

### **PANCAKES PANCAKES PANCAKES**

**Shrove Tuesday – February 17th**

**12 noon to 2pm**

**Grenville Rooms**

**Please note change of Venue**

**Savoury or Sweet Pancakes**

**£4.00**

**including tea/coffee, biscuits**

**and lucky ticket**

***Proceeds for St James Church  
Flower Fund***

### **ADVANCE NOTICE:**

**The 2026**

**Kilkhampton Church Christmas Craft  
Fayre**

**will take place**

**on **Saturday 21st November****

S  
T  
A  
L  
L  
S

S  
T  
A  
L  
L  
S

**SATURDAY 7<sup>th</sup> February**  
**10.30AM – 12.00 NOON**  
**METHODIST CHURCH HALL**  
**A VERY WARM WELCOME TO ALL!**  
 The Charity for February is Oriel Ministries



**Kilkhampston Post Office**  
**is now open!**

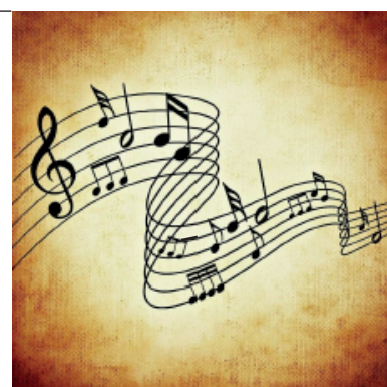
The Post Office is now located in the Spar at Kilkhampston. Opening times are:

***Tuesdays 9am to 3pm***

***Thursdays 9am to 3pm***

*Organ Recital*  
*St James Church, Kilkhampston*  
*Friday 20<sup>th</sup> February, 7pm*

*Organist: Llewelyn Blezard-Greenwell*



£10 (£5 retired and children), paid on the door.

Refreshments will be served during the interval.

Llew (pronounced 'clow' for non-Welsh speakers!) is a remarkable 18 year old musician, who has been studying music since the age of 4. He plays the organ, piano and harp as well as being a choral singer. He has performed at many prestigious venues in the UK and abroad. Llew is currently an Organ Scholar at St David's Cathedral, Pembrokeshire, with ambitions to become a Cathedral Director of Music in the future.

### SUPPORT KILKHAMPTON FOOTBALL CLUB!

See below for February fixtures: Men's 1st and 2<sup>nd</sup> teams plus Kilkhampston Women's team

<u>Date</u>	<u>Time</u>	<u>Teams</u>
1st February	2 pm	Kilk Women v St Agnes AFC
7th February	2.30 pm	Kilk Mens 1st v Altarnun
8th February	2 pm	Bodmin v Kilk Women
14th February	2.30 pm	Kilk Mens 2nd v St Merryn
15th February	2 pm	Kilk Women v Sticker Women
22nd February	2 pm	Mousehole v Kilk Women
28th February	2.30 pm	Kilk Mens 2nd v Launceston Development



## KILK KRAFTS REPORT

*Note: these reports cover the meetings up to the end of December 2025*

On 12th November, Suzanne taught the group how to make a Shadow Box card. Everyone was provided with a starting kit of materials. Firstly the box frame was constructed, then a decoupage picture was placed carefully in the centre and a 3D effect obtained by using spacers. The whole thing was completed with a clear plastic cover, and then placed in a box. Everyone enjoyed the afternoon and were very pleased with their cards.



*A completed Shadow Box card plus box*



*The starting kit*



*The group's completed cards!*

On 26th November, the group warmly welcomed back Helen (formerly the Kings Hill Florist) who has recently moved from Bude to live in Underhill Cottage in Kilk, with a 2.5 acre garden and large workshop to expand her business. She is still exploring the existing plants in her garden, with many appearing as the seasons change. She hopes to hold a charity garden party for villagers next year.

Helen showed the group how to make a Christmas candle table arrangement. She brought greenery such as spruce, ivy, eucalyptus, fir, and camellia together with roses, fir cones, berries and baubles. She started by preparing the greenery and flowers by removing most of the leaves from the roses, and also the bottom of the stems of the greenery with a diagonal cut, then placed everything in water.

Next, Helen rested a block of oasis on top of the water (with flower food) in a bucket. This allows the block to gradually soak up the water and sink to the bottom when fully absorbed. The water is filtered before discarding, to prevent micro plastic from entering the ecosystem. The oasis was attached to a tray with floristry tape, with the edges cut away to allow any escaping water to reabsorb once the foliage had been inserted. Starting with longer stems at each end, Helen covered the whole block with layers, putting them no more than 2 inches deep. She showed the group how to use cocktail sticks to hold thin candles in place. Then the flowers, cones and other decorations were added. With the oasis kept moist, it should last about 3 weeks.



*The greenery and candles*



*Adding the finishing touches!*



*Left: Presenting the finished arrangement to Joan Sillifant*

Everyone enjoyed the demonstration, and to finish, Helen asked who had a birthday in December and presented the arrangement she made to the winner, Joan Sillifant. If anyone requires any greenery or floristry items, phone Helen on 07894 869765.

*(Continued on page 8)*

(Kilk KRAFTS report, continued from page 7)

The final meeting of Kilk KRAFTS for 2025 took place on 10th December, when 28 ladies enjoyed Christmas Bingo, with Reg Hambley calling the numbers. There were lots of lovely prizes for those who called "line" or "bingo".

Each member had brought a small plate of food so everyone enjoyed a feast with their cup of tea/coffee. On behalf of the members, Lynn Whaley presented Lorna and Joyce with gifts of an Amaryllis and bottle of wine each in appreciation of all their efforts to run the group and arrange the entertainment each month throughout the year.

## **KILK KRAFTS FEBRUARY MEETINGS**

Wednesday 11 February

Buttoncraft with Jan

Wednesday 25 February

Healthy, happy feet with Jo Hutt

*Methodist Chapel, Kilkhampton*

*Time: 2pm to 4.30pm*

*Cost: £2 per session plus small material costs as needed*

Any questions, contact:

Joyce (01288 321292)

Or Lorna (01288 321706)

## **Stay And Play**



Kilkhampton Methodist Church

February 12<sup>th</sup> & 26<sup>th</sup>

For children under 5 and their parents, grandparents or carers

Please join us for tea/coffee and chat while the children play

**ALL WELCOME**

For further information please call or message Fiona on

01288 321261 or 07854 141474

## **KILK COMMUNITY LUNCH**

Brought to you by Kilk Coffee & Cakes Team

2 COURSE HOT MEAL FOR £7

ON

Friday 30<sup>th</sup> January

At 12.30 pm

AT

THE GRENVILLE ROOMS

Limited numbers so please book  
to ensure a place  
contact 01288 321073



## **BAND TOGETHER 2026**

Bude Metric Brass Band and guest players from across the country present a concert you will not want to miss.

**MUSICAL DIRECTOR: MR COLIN GAY**

DATE:

7:00 PM **21** FEBRUARY

THE VENUE, BUDE  
(ABOVE THE BOWLING ALLEY)

[www.BudeMetricBrass.org.uk](http://www.BudeMetricBrass.org.uk)



TICKETS £12 IN ADVANCE  
ONLINE & FROM BUDE  
TOURIST INFO CENTRE OR  
£15 ON THE DOOR  
CHILDREN: FREE

## **Kilkhampston Parish Council**

Report of the regular meetings held on  
1 December 2025 and 5 January 2026  
[www.kilkhampston-pc.gov.uk](http://www.kilkhampston-pc.gov.uk)

### **1 December 2025 meeting**

**Attendance:** Reg Hambley (RH), Keith Ovenden (KO), Tim Cottle (TC), Joanne Timmins (JT), Ian Heard (IH), Kingsley Bryant (KB), Cornwall Cllr Faye Emery (FE).

**Apologies:** Vinnie James (VJ), Phil Sluggett (PS), Lee Bond (LB).

**Chairman:** Councillor Clive Vanstone

**Clerk:** Hannah Collett

Good evening to all by the Chairman. The Chairman began by giving condolences to Mr Alan Cottle who recently passed away and Mr Steve Heard who was previously on the Parish Council. All upstanding for a minutes silence. Thank you to all by the Chairman.

**Minutes** Approved by all and to be signed by the Chairman at the end of the meeting.

**Adopt Code of Conduct**

**Declaration of Interest** None

### **Public Speaking Session**

Mr Martin Brennan here to discuss the Parish Magazine. The printer has now completely broken. A new one is approximately £5000. No funds available from the Parish Magazine to replace. Have been trying to assess how many Parishioners would want a paper copy. Approximately 615 copies are printed each month. If the printer hadn't broken they would be carrying on with paper copies. The Chairman felt it is a great way to communicate with the parishioners, more so than purely online. The Chairman asked if the Parish Council were to purchase a printer of their own – would this help to keep the magazine going? Mr Brennan felt it would definitely answer immediate issues. The Chairman proposed the Parish Council purchase a printer, to belong to the Parish Council. Ongoing costs would be down to the Parish Council also. KB seconded and all in favour. Thanks by Mr Brennan. RH mentioned the survey that had been distributed. Mr Brennan to update as necessary. Thanks to Mr Brennan by the Chairman.

### **Planning Applications**

Small Trees application: RH talked through. Said access only – access already there. Red line requested to move up further – details online already.

1. PA25/08071 5 November 2025 Certificate of lawfulness for existing use and retention of 2 poly tunnels for horticulture on agricultural land Location Applicant Grid Ref Land West Of Aldercombe Cottages Kilkhampston Bude Cornwall Mrs Bridget Macklin. Talked through. Nothing to refuse – just a poly tunnel. IH moved and RH seconded all in favour.

2. PA25/08590 19 November 2025 Erection of agricultural building for the storage of agricultural

equipment, fodder, and implements Location Applicant Grid Ref Land South Of Burrigge House Morwenstow Bude Cornwall Mr T Parrish. RH talked through previous application received. Planning officer went and felt the shed was too large for the land. Agent has now reduced to the officer's recommended size. We approved the first application. No need to refuse this one which is now smaller. Reiterated we can only deal with what is in front of us. KO moved and JT seconded.

3. Non-material amendment in relation to decision notice PA12/05289 dated 26.07.2013: Amendment to consented existing turbine dimensions Location Applicant Haystax Ivyleaf Hill Kilkhampston Bude Cornwall EX23 9LD Mr Philip Stanbury. FE informed they are needing to replace the wind turbine (apparently they can't get the same size anymore) Discussed. Nothing to report.

4. 11 Lower Village Kilkhampston Bude Cornwall EX23 9QN Mr and Mrs Dean and Jane Taylor. Was discussed at the last meeting. Reconsidered plan and putting ridge roof to match the other one. Details talked through by RH. We should receive this new application soon and need to decide now as the January meeting will be too late. Will be similar to houses nearby. RH suggested when it comes in the Chairman, Vice Chairman and himself to look through the plans and Clerk to send to all. Decision to be made then.

### **Matters**

1. Car park and Toilets: £87.50 taken. Alarm had been going off – Mr Somerfield sorted.

2. Precept: Calculator tool shown by the Chairman. We currently receive £32,000. This takes into account numerous factors. The Chairman talked through how the band figures are made up. If we keep the same there is a reduction of 3.1%. KO mentioned we discussed last year of keeping the same – but increased a little. We don't have major projects coming up. TC felt we should leave it as it is. RH seconded, all in favour.

3. Other matters arising from the minutes: None

### **Reports**

Footpaths: IH stated that the 3rd cut has been completed. Repairs will be looked at in the new year. FE needed details of exactly where the bridge is that needs repairing. LMP for footpaths next year will be £2,696.21. Kespit been repaired by IH – Cornwall Council sent the supplies and IH put it up.

Playing fields and Lamb Park: Picture of dead tree received from FE – diagram showing branches that need attention. The Chairman said we need to deal with this now we have all the necessary information. Need to close the playpark whilst work is undertaken. KO said we need to assess what we can use machinery-wise. IH to liaise with a company for relevant machinery required. KO also mentioned

(Continued on page10)

that a Parishioner had said that the other tree that has died – the owner has been taking little bits off. The Chairman will check again with the homeowner. Maybe deal with this at the same time too. TC felt there was also a tree in the carpark to be looked at. School: LB not here.

Grenville Rooms: Work done on the roof repairs. Talked through.

**Month's work** All Ok.

### Members

RH mentioned the Carol Service will be at the chapel, Wednesday 17th December at 6.30pm. Christmas tree to be put up tomorrow and move the soldier back inside the church. Hoping for the new light to be put up too.

KB, TC – nothing

KO – informed that the Perspex panel replacement for the postbox has gone.

IH – Aldercombe Lane water issue – Cornwall Council have been to look at and spoken to the gentleman. Are going to fix – in hand.

JT – CAP meeting on Monday 8th December.

FE – Mr Oliver Jones from Highways came to the village last week – several items discussed. Mr Jones has reported the noisy manhole cover, pot holes, Thorne Bend – apparently no accident data in the last 5 years. Only gets reported if an injury occurs. Checked signage and floor markings – apparently all OK. KO said there are usually around 3 cars a year that drive into the hedge. FE asked what could be done at Thorne Corner? Rumble strips? FE to go back to the police about it. The crossing will have a consultation done. New bollards are within Highway standard apparently. A letter had been written in the Bude and Stratton post about bad design for lorry drivers. A parishioner had emailed with pictures of the damage caused on the corner of the land due to drivers, nothing lorry drivers can do to avoid. Clerk to reply and state thanks for their concern. Has been mentioned to Highways contact. Highways budget email should have been received – so can apply. The crossing by the school could be something – however as we have a lollipop person, it may not get approved for an official crossing.

Budget briefing for Cornwall Council is next Monday and transport meeting on Wednesday. Housing summit at the Parkhouse on the 19th.

Blackberry Lane – different complaints about the road and footpaths – moving in the right direction hopefully. They didn't know till it was mentioned to them.

**Correspondence** Request for information on car park details received. Clerk to reply accordingly.

### Finance

Read through by Chairman. Invoices to be paid: £118.00 Alan Somerfield; £72.00 Stephen Gifford;

£180.00 West Creative; £46.73 Bridgmans; £500.00 Savilles (Glebe Land); £712.00 Archies Garden Services; £2,215.20 A P Cottle and Son Ltd. All in favour to be paid. Total balance before aforementioned payments £23,846.48

Thanks to all by the Chairman and Merry Christmas. Declared the meeting closed.

### 5 January 2026 meeting

**Attendance:** Kingsley Bryant (KB), Tim Cottle (TC), Ian Heard (IH), Phil Sluggett (PS), Lee Bond (LB), Cornwall Cllr Faye Emery (FE).

**Apologies:** Joanne Timmins (JT), Reg Hambley (RH), Keith Ovenden (KO), Vinnie James (VJ).

**Chairman:** Councillor Clive Vanstone

**Clerk:** Hannah Collett

Good evening to all by the Chairman.

**Minutes** Approved by all and to be signed by the Chairman at the end of the meeting.

**Adopt Code of Conduct**

**Declaration of Interest** IH for PA25/08066

**Public Speaking Session** Mr Martin Brennan here but nothing to be said. The Chairman mentioned that the printer for the Parish News has been ordered and paid for.

### Planning Applications

IH left the room

1. PA25/08066 16 December 2025 Permission in Principle for proposed residential development (minimum 1 dwelling, maximum of 1 dwelling Location Applicant Grid Ref Land At Lymsworthy Farm Kilkhampton Mr D Johnson. Map shown on screen. Details discussed. Mentioned that it is in a hamlet. The Chairman couldn't see grounds for refusal. In a good area with regards to other buildings around. TC asked if any agricultural ties – no. Vice Chairman also couldn't see any issues, as long as they don't develop further in the future. The Chairman felt they must have received some advice. No ties on immediate surrounding buildings either. FE asked what state the lane was in. The Chairman said it is well maintained up to this point. LB proposed approval and KB seconded. All in favour. IH back in the room

2. PA25/09042 Change of use/conversion of a non-listed curtilage building to a dwelling with one bedroomed annex, together with the erection of a two storey extension on the footprint of an existing lean-to outbuilding. Scadghill Farm Stibb Bude EX23 9HN. Conversion of barn. Keeping existing footprint – not going any larger. Drawings shown and discussed in detail. Existing buildings there already within curtilage. Two access routes there already. LB proposed approval and IH seconded. All in favour.

3. PA25/09043 17 December 2025 Listed Building Consent for the change of use/conversion of a non-

(Continued on page 11)

(Council minutes, continued from page 10)

listed curtilage building to a dwelling with one bedroomed annex, together with the erection of a two-storey extension on the footprint of an existing lean-to outbuilding. Location Applicant Grid Ref Scadghill Farm Stibb Bude EX23 9HN. RS and EF Priest. As above.

4. PA25/08388 22 December 2025 Reserved Matters application following Outline approval PA22/05541 dated 08/11/2022 for the erection of up to five dwellings (appearance, landscaping, layout and scale). Location Applicant Grid Ref Land South Of Down Park Farm Kilkhampton Bude Cornwall Mrs Deborah Hockridge. Renewal – terms haven't changed since original one. KB proposed approval and PS seconded. All in favour.

### **Matters**

1. Car park and Toilets: £94.50 taken. TC spoke to Mr Somerfield and asked if we should freshen up the outside of the toilets. To be discussed at the next meeting. TC asked if we should think again about changing the charges for the toilets to a card reader machine instead of coins. We constantly have jammed coins and issues currently. TC to look into costings etc.

2. Kilkhampton Safety Scheme: Drawings shown. Meeting held with Mr Oliver Jones stated that there were to be no yellow lines implemented. Details discussed about the markings near the crossing. Asked if we could request that the line is reduced to the minimum possible legal length from the crossing going north. FE stated businesses can object separately. Hoping people have commented officially also. TC mentioned again the width of the New Inn side pavement. Apparently no money available for alterations like that. Reply to be made as follows: "Please note that we support the West side alterations, however – please could we have the yellow lines on the East Side, from the crossing towards Penshell House, reduced to the legal minimum length." FE to also speak to them directly.

3. Other matters arising from the minutes: None

### **Reports**

Footpaths: IH – nothing at the moment. Repairs all in hand.

Playing fields and Lamb Park: Trees to be sorted.

School: Back in today – Governors meeting next Wednesday per LB.

Grenville Rooms: RH not here. Good Christmas Fayre. Some repairs done. Some still to be completed.

**Month's work** All Ok.

### **Members**

KB – Thanks to the Grenville Rooms and Parish Council for Christmas light – need to think about where to store it. The manhole cover by the school still rattling. Clerk had emailed Highways but heard

nothing back. FE felt it may be South West Water that is dealing with it.

Message from the Postmaster read through. Post Office will be open in the Spar on Tuesdays and Thursdays from 9am-3pm. Thanks given to the Parish Council and Grenville Rooms for all their support.

TC – Possible abandoned car at Lamb Park – apparently not taxed. Should we get another container – other one is full to the brim. All areas to be checked out first for possible clearing out.

IH – Christmas tree needs to come down tomorrow.

PS, LB – Nothing

FE – Highways improvement plan – Thorne Corner – No official accident data held. Do we know how many incidents there have been? The Chairman stated he knew of at least three last year. One car was written off and two ended up in the hedge. IH stated a lot – at least one every 6 months, and the last car was extremely close to hitting the telegraph pole. Could have been a much worse outcome.

Community chest application needs to be done. Form to be sorted and sent over. Photos are looking good for the bus shelter - per The Chairman.

Aldercombe Lane – FE thinks they tried to unblock the issue but failed. Might take a while to sort. FE to mention to them again.

Christmas Carol donations to be given to the Citizens Advice Organisation again.

### **Finance**

Read through by Chairman. Invoices to be paid: £118.00 Alan Somerfield; £90.00 Stephen Gifford; £3,092.35 Election Charges to Cornwall Council; £10.00 Bridgmans; £267.00 Morwenstow Parish for Duckpool. All in favour to be paid. Total balance before aforementioned payments £14,782.72.

Date of next regular meeting: 2nd February 2026, Grenville Rooms, 7.30pm.

Thanks to all by the Chairman. Declared the meeting closed.

## **Johnny Cowling Concert**

***Tickets selling fast!***

**Sunday 15th February**

**7pm (doors open from 6pm)**

**St James Church**

**£15 including pasty**

***Tickets: Contact Reg 01288 321340***

***or Joyce 01288 321292***

# KILKHAMPTON JUNIOR AND INFANTS SCHOOL

As this is my first article in 2026 for Kilkhampston Parish News, may I take this opportunity to wish you all a happy new year. I hope you all had a wonderful Christmas break.

This is also my first chance to report on what happened in school prior to the Christmas break. The children staged three Christmas plays, which were really well attended. Reception and Year One performed 'A Hushaby Nativity,' a nativity play told from the point of the view of the animals in the stable.



*Key Stage One performing 'A Hushaby Nativity'*



*A Hushaby Nativity*



*Year Three and Four performing 'A Bethlehem Bake Off'*



*A Bethlehem Bake Off*

Year Three and Four performed 'A Bethlehem Bake Off,' with all of the characters visiting the stable taking part in a baking competition, whilst Year Five and Six performed 'Forever Treasure Island' - a musical version of the Robert Louis Stevenson tale.



*Year Five and Six performing 'Forever Treasure Island'*



*Forever Treasure Island*

*Right: Two of our pupils, Charlotte and Josh, took part in the Cornwall Air Ambulance Christmas campaign advert. We got a sneak preview!*



*(Continued on page 13)*

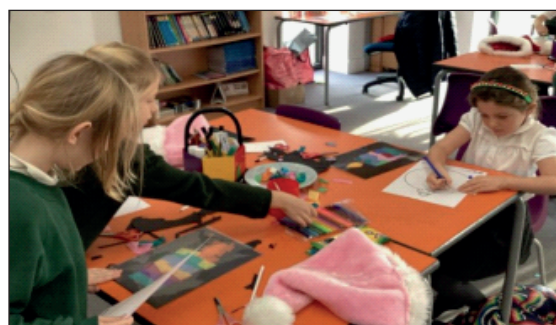


*Children making Christingles with the help of volunteers from the church*

The children also visited the church for a Christingle celebration. It was a lovely moment when the children were standing in the church with their lighted Christingles. I would like to say a big thank you to Reverend Teresa and the helpers from the church who worked with our children to make over 150 Christingles!



*Above, below and left: Christmas craft day*



*Children enjoying Christmas dinner*

The final week of term was marked with the school Christmas dinner, where we all sat together in the hall. A big thank you to Debbie and Sally in the kitchen who cooked and served over 130 meals!

It has been nice to get back to school this term and to get back into a non-festive routine. That school routine was disrupted on Thursday 8th January, when we had to close early because of guidance from Cornwall Council who wanted all pupils, parents and staff to be safely at home before the start of the red warning triggered by Storm Goretti. Parents and carers were superb and all children were collected early. Luckily, although wild, the school escaped significant damage from the storm, with only a small piece of fencing brought down.

There is lots going on this term, with interim reports being sent home in March followed by our second round of parents' evenings. We also have a range of events which are marked in a primary school: World Book Day at the beginning of March, plus Saint Piran's Day, when we always have a pasty lunch and sing Trelawney. Later in the month is Red Nose Day and the ever-popular talent show, Kilk's Got Talent, where we raise money for Comic Relief.

I have included pictures of our festive events for you to enjoy, and will be back in the March edition.

*Michael*

## TREE BOOK GROUP: *from December and January meetings*

### December: *The Appeal* by Janice Hallett

The book is presented as a series of documents, featuring emails, WhatsApp exchanges and SMS messages from a number of characters, all of whom have been involved in the events which culminated in the death of Samantha Greenwood, a former nurse who, after working with her husband Kel for many years in sub-Saharan Africa with a humanitarian aid organisation, has returned to the UK and taken up residence in the small town of Lockwood.

The premise of the novel is that someone (we don't discover who until near the end of the book) has been wrongly convicted of murdering Sam. The book is presented as a dossier compiled by the accused's legal team. The barrister representing the client has asked two paralegals at a firm of solicitors to review the papers, with no prior knowledge of the case, to see whether they spot any irregularities or inconsistencies that might be exploited in any appeal process.

The plot revolves around the actions and motives of the members of the Lockwood Amateur Dramatic Society, which in turn revolve around the Haywards and Reswicks, the community's self-appointed leading family. Martin Hayward is owner of The Grange, a large hotel complex within the town, and has been leader of the Drama Society for years, while his wife Helen has always taken the leading female roles. As the story opens, the Society is about to start preparations for a presentation of Arthur Miller's play, *All My Sons*. However, soon after preparations begin, Martin announces to the

membership of the Society that his two-year-old granddaughter Poppy has been diagnosed with a severe form of brain cancer, and that her only hope is a newly discovered wonder drug that is only available at huge cost from America. On this news, the Society is galvanised into action, and an appeal campaign is formed.

The correspondence is cleverly presented – we don't always see both sides of an exchange, and all sorts of sub-stories emerge.

The characterisation is great, too. For instance, Isabel 'Issy' Beck seems very needy, and is desperate to make friends, unaware of how clingy she appears. Sarah Jane MacDonald emerges as the lead administrator of the Appeal Fund, and is full of drive, and ideas, but not always patient with those upon whose help she comes to rely. Martin Hayward is sometimes imperious, and also prickly, likely to resent being questioned too deeply about Poppy's condition. Almost the only person from whom we never hear is his wife, Helen, who (we learn) has studiously avoided engagement with modern communications technology, and apparently 'doesn't do email'.

All in all, this works wonderfully and all sorts of subplots and strained relationships emerge.

When I first encountered the book, I had my doubts about the format, wondering whether it might simply be gimmicky. That could not be further from the truth. The drip feed of information works excellently. Janice Hallett manages the plot adeptly too and I lost count of the unexpected twists and turns.

---

### January: *Ragwort* by Sam K Horton

*Ragwort* is the second book in The Eythin Legacy, following *Gorse*.

In *Ragwort*, we reunite with the captivating Nancy Bligh, who is grappling with the devastating loss of her father, Pel, as she steps into the formidable role of Keeper of Mirecombe. Determined to rise above the shadows of her father's legacy, Nancy battles with her destructive murmur, which is an untamed magic that Pel urged her to suppress. The village is in chaos, with new cults springing up around Pel, Cleaver, and even Nancy herself, while the mysterious creatures of the moors whisper secrets of The Mother.

As Nancy clings to the folklore surrounding her grandmother, a woman once condemned as a witch, she embarks on a daring quest to find her believing

that her grandmother may hold the crucial answers to unlock her powers and reveal the truth about The Mother before darkness descends.

The writing shines brighter than ever, captivating with beauty and the eerie menace of Cornwall's moors and rugged coastline. This novel delves deep into the transformative power of stories – the ones we inherit, the ones we cherish, and those that ultimately shape our destiny.

Themes of family, legacy, and belief pulse vibrantly through the pages, making *Ragwort* a richly layered and haunting read. This beautifully penned sequel stands strong on its own, but for the ultimate experience, start by reading *Gorse*.

DOROTHY FLAXMAN

(Contact [derekflaxman@btinternet.com](mailto:derekflaxman@btinternet.com))

## BUDE LOOK GROUP

Along with our mince pies, Bude Look Group enjoyed a very different meeting from usual in December. Each member had chosen three paintings they would love to wake up to on a dull morning. Preparing for the meeting was a fantastical Christmas shop around the famous galleries of the world. Here are some of the choices:



Howard Hodgkin, *Scotland*,  
1994-95

Look carefully at the painting on the left, and you will see the frame itself has also been painted by the artist Howard Hodgkin. It is like looking through the window of a dark cottage to catch a glimpse of the glowing bracken on a Scottish moor. The member who chose it remembered having met the artist, whose work she loved. In fact, it became evident that everyone had a personal story associated with their choice.

The painting on the right evoked a memory of catching a bus in Italy, travelling to an isolated village then walking through allotments in the hot sunshine to find a tiny, deserted chapel with an open door and this breath-taking fresco of a pregnant Virgin Mary. These days it has its own building to keep it secure.



Piero della Francesca,  
*La Madonna del Parto*, 1450-75



Kurt Jackson,  
*Scilly Above the Shallows* 2018

Two of us chose paintings by Kurt Jackson who has a wonderful gallery in St Just, Cape Cornwall. In the painting on the left, the turquoise sea looks transparent against the fierce colours of the rocky shore.

This luminous seascape on the right by an Impressionist Spanish artist conjured childhood memories of solitude and the beginnings of a deep involvement with the sea.



Joaquín Sorolla y Bastida,  
*Niña en marplateado* 1909



Claude Monet *Red Boats at Argenteuil*,  
1875

*Below left:* Here, brilliant complimentary colours bring joy and contentment. Gazing at art has been proven to have similar positive effects to being in nature.

And finally, on the right, we have a tongue-in-cheek painting of chefs engaged in coaxing frogs in a race towards a frying pan. Could they have leapt out of Monet's painting of a lily pond? Laughter is great at reducing any Christmas stresses too!

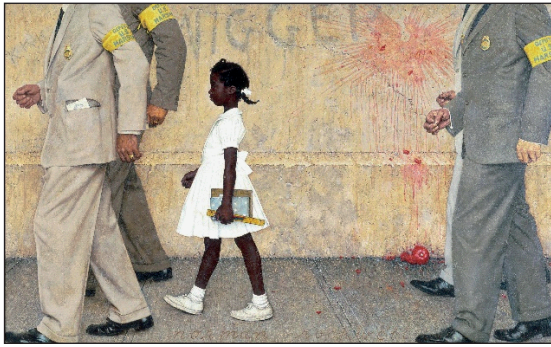


Thomas Bossard *La course des grenouilles* (The Frog Race) 2023

(See page 16 for Bude Look Group's report from January 2026)

(Bude Look Group, continued from page 15)

To launch the new year, Bude Look Group focused on **Art that Protests or Speaks for a Cause**. Art can convey a message more powerfully than words. Here are six of our choices. Which one speaks loudest to you?



Norman Rockwell *The Problem We All Live With*, 1963

The above picture is Ruby aged six on her first day at school in 1960. The painting depicts Ruby's courageous walk to school after a federal court ordered the New Orleans school system to integrate. We view the scene at her eye level as she dutifully follows faceless men – the yellow armbands reveal them to be federal marshals – who escort her past a wall smeared with racist graffiti and the juice of a thrown tomato. White parents were outraged that an African American should join their school and withdrew their children. For a year Ruby was the only child in her class. Rockwell painted this as a powerful way to say this is wrong.

The cartoon immediately to the right captures our attention because we think of the crucifixion, of Europe and migrants in life jackets struggling in water. It speaks of persecution and demands empathy.



Arthouse Unlimited

The above painting ended our meeting and spoke for a very good cause. Arthouse Unlimited is a charity that showcases the artistic talents and skills of adults who live with diverse learning and physical disabilities. As well as beautiful paintings a wide range of goods can be bought online to support the cause.

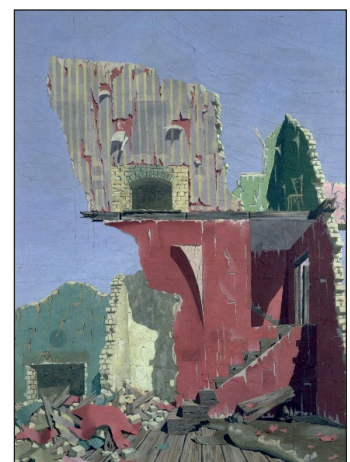


The Guerrilla Girls *Do women have to be naked to get into the Met. Museum?* 1989

The Guerrilla Girls wore Gorilla masks when protesting. They called for equity for women and artists of colour in the art world, and they chose humour as their chief weapon. This poster, which features the female nude in Jean Auguste Dominique Ingres's painting, *La Grande Odalisque* (1814), donning a gorilla mask, made a huge impact.



Khalid Albaih's cartoons challenge power and indifference



John Armstrong *Revelations*, 1938



Joe Minter *Four Hundred Years of Free Labor*, 1995

The Armstrong painting above, part of a series protesting Fascism in Europe, remains relevant today. Its pastel colours show how fragile our world is and how easily it can topple.

To the left, a collection of weathered tools, welded to resemble a family, stands eight feet high. They confront the viewer. There are chains and the tines of the forks reach out like claws while the spade heads stare accusatively. It is a homage to the anonymous slave labourers who once wielded them.

Bude Look Group meets monthly - contact [chris.edwards39@btinternet.com](mailto:chris.edwards39@btinternet.com)