

# KILKHAMPTON PARISH NEWS

[www.kilkhampston.news](http://www.kilkhampston.news)

September 2022

## *Welcome...*

*To the first issue after the summer break!*

*We hope you find lots to interest you in this issue, as usual we are highlighting the village events plus those further afield that are sent in to us.*

*If you want to submit something but aren't sure if it's the sort of thing we would publish - just ask! Details of what to do and who to contact for adverts or editorial notices and articles are at the bottom of pages 2 and 3.*

### *Inside this issue...*

- |                    |  |
|--------------------|--|
| <i>Page 4</i>      | <i>Harvest Festival Lunch at the beginning of October</i>  |
| <i>Page 6</i>      | <i>Kilk Krafts report and details of their September meetings</i>  |
| <i>Page 7</i>      | <i>Event notices: Coffee and Cakes, Community Lunch, this month's Big Breakfast and a Coffee and Crafts day in Bradworthy in October</i> |
| <i>Page 8</i>      | <i>A double report from the Tree Book Group in Stratton, plus this month's table tennis date</i>   |
| <i>Page 9</i>      | <i>Bude Look Group report from their July meeting, on the topic of painting trees</i>  |
| <i>Pages 10-11</i> | <i>Kilkhampston Parish Council's July meeting report</i>   |
| <i>Pages 12-13</i> | <i>Kilkhampston Parish Council's August meeting report</i>   |
| <i>Page 14</i>     | <i>Of course, it's Uncle Eric!</i>   |



## St James the Great, Kilkhampton

<b><i>Priest-in-Charge:</i></b>	<b>Reverend Teresa Folland</b> Teresa.folland@gmail.com	01288 352599
<b><i>Retired priest</i></b>	<b>Reverend Richard Ward-Smith</b> Barn Farm, Kilkhampton EX23 9RH R.wardsmith@btinternet.com	01288 321991
<b><i>Safeguarding Officer:</i></b>	<b>Mr. Kevin G. McGrath</b> Frank's Folly, The Square, Kilkhampton EX23 9QQ	01288 321277
<b><i>Churchwardens:</i></b>	<b>Mr. Kevin McGrath</b> <b>Mr. Luke Francis</b>	As above 01288 321270
<b><i>Lay-Chair of the PCC:</i></b>	<b>Mr. Tony Davis</b> Highfield House, 1 Baileys Field West Street, Kilkhampton EX23 9QE	01288 321292
<b><i>Treasurer to the PCC:</i></b>	<b>Mr. Peter Hobbs</b> Wrasford, Kilkhampton EX23 9RL	01288 321551
<b><i>Secretary to the PCC:</i></b>	<b>Reverend Richard Ward-Smith</b>	01288 321991
<b><i>Organist</i></b>	<b>Mr. Luke Francis</b>	As above
<b><i>Bell Tower Captain:</i></b>	<b>Mr. Tony Davis</b> Highfield House, 1 Baileys Field West Street, Kilkhampton EX23 9QE	01288 321292
<b><i>Flower Coordinator:</i></b>	<b>Mrs. Jeanette Norman</b> Ching's Lodge, Penstowe Road, Kilkhampton, EX23 9QT	01288 321404
<b><i>Electoral Roll Officer:</i></b>	<b>Reverend Richard Ward-Smith</b>	As above

## Kilkhampton Methodist Chapel

<b><i>Church Stewards:</i></b>	<b>Mr. Reg Hambley</b> The Hill Park Centre, Kilkhampton EX23 9QQ  <b>Mr. John Brooks</b> Killarney Park, Youlstone EX23 9PX  <b>Fiona Cleave</b> Higher Pigsdon Farm, Launcells EX23 9LQ	01288 321340
<b><i>Treasurer:</i></b>	<b>Mr. M. Metherell</b> Stapleton, Whitecroft Way, Kilkhampton EX23 9RE	01288 321248
<b><i>Room Bookings</i></b>	<b>Contact Reg Hambley on the above number</b>	

## Kilkhampton Parish News Editorial team

Chair: Barrie Rose barrierose22@btinternet.com 01288 321117

News editor: Jill Rodgers jill@kilkhampton.news 01288 321144 or 07747  
006601

Advertising editor: Adam Lee adam@kilkhampton.news 07747 758704

Advertising manager: Martin Cross martin@kilkhampton.news 01288 321806 or  
07484 147056

## EDITORIAL



Hello everyone,

I hope you have all had a lovely summer - it feels a long time since the last issue, and not long now before schools start again for the autumn term.

I used my 'month off' from editing to go with my husband Mike to France in our motorhome, our first trip abroad. I was pretty nervous about the trip as a whole, but other than making sure we had comprehensive holiday and breakdown insurance, I couldn't do much other planning to avoid disasters!

I loved driving on the wrong side of the road - as we see it anyway! The roads were lovely, France has the same population as the UK, just over 67 million, but has more than double the land area, and of course like any country, most of the people live in or around the major cities. So everything is more spread out, and it is possible to visit places that are on the tourist trail but are fairly small and not overcrowded.

We spent a week taking a leisurely route through France, including the Champagne and Burgundy regions which were beautiful. Miles and miles of vineyards on the gently sloping hills, plus lots of



*Yes, there really is a place called 'Chardonnay'. Mike asked me to stop and reverse to take this photograph*

*This is a 'vineyard tractor' - very specialised to fit between the narrow rows of vines without damaging the crops. As well as practical functions such as pruning, maintenance and harvesting of the crops, they are becoming increasingly sophisticated, with state of the art technology and air-conditioned cabs*



archaeologically interesting places to keep Mike happy!

We then spent a week at Lake Annecy, meeting up with family. It's a beautiful area, and they are in the process of creating a cycle-only track around the whole lake, which is 25 miles in total. Currently, there are a few places where you still have to use the road - and a few places where the hills are a bit steep! But it was obviously one of the area's attractions, along with paragliding, sailing and various other lake-based activities. We decided that Mike's scooter probably wouldn't make the whole journey round...

We got very used to good weather over there, especially knowing that it wasn't going to rain overnight which is so rare here - then we came back to the heat wave in the UK! So we didn't need to go all that way for the sunshine after all. Luckily it's beginning to cool off a bit as I write - it won't be long before we are complaining about all the rain we have again. No doubt global warming is going to play a big part in our weather systems in the coming years.

Enjoy the autumn, and we'll be back next month!

*Jill*

### ST JAMES CHURCH FLOODLIGHTING SPONSORSHIP

Please clearly write or type your notices for the church floodlighting page, put them in an envelope with the £5 fee, and give them in at the Spar by the 11<sup>th</sup> of each month.

If you have any queries, please contact Tracey Smith at [kilkchurchlights@gmail.com](mailto:kilkchurchlights@gmail.com) or phone her on 321432 or 07740 520459

Cheques should be made payable to 'KILKHAMPTON PCC'

Please use the contact details on the opposite page to enquire about advertising (Martin), submit or amend your advert (Adam), or send in submissions for the editorial page (Jill). We are happy to be contacted in the first instance and we're happy to accept notices of events and news items. Adverts need to be submitted by 1<sup>st</sup> of the month for the following month, and editorial submissions by 12<sup>th</sup> of the month.

The opinions expressed in this newsletter are not necessarily those of the editor. The editor cannot be held responsible for the content of any articles, notices or other submissions to this newsletter. The editor cannot guarantee inclusion of articles or notices submitted for publication, and the layout and size of all articles (unless paid for) is at the discretion of the editor.

# **Kilkhampton Church Services**

## ***St James Church***

**Sunday 4<sup>th</sup> September - 12<sup>th</sup> Sunday after Trinity 11am Holy Communion**

Welcomers: Lynn and Myra. Reader: Peter: Deuteronomy 30, 15-end.

With Reverend Teresa

**Sunday 11<sup>th</sup> September – 13<sup>th</sup> Sunday after Trinity 11am Morning Worship**

Welcomers: Tracey and Rita. Reader: Kevin: Exodus 32, 7-14.

With Shorne Tilbey

**Sunday 18<sup>th</sup> September - 14<sup>th</sup> Sunday after Trinity 11am Holy Communion**

Welcomers: Joyce and Jenny. Reader: Tony: Amos 8, 4-7.

With Reverend Teresa

**Sunday 25<sup>th</sup> September - 15<sup>th</sup> Sunday after Trinity 11am Morning Worship**

Welcomers: Claire and Margaret. Reader: Hilbre: Amos 6, 1a, 4-7.

With Richard Painter

**If anyone is unable to make their appointed date please arrange a replacement**

**Daily Morning Prayer: 9am** Everyone welcome to drop in on any day

ZOOM Meeting ID 818 0754 3068 Password 342 493 Telephone 02030512874 or 02030515237

## **ST JAMES CHURCH HARVEST FESTIVAL LUNCH**

**Sunday 2<sup>nd</sup> October at 12.30**

**Grenville Rooms**

**Cold meat/salad - Homemade Puddings -**

**Cheese and Biscuits - Tea or Coffee**

**Tickets £10 – please ring Joyce on 321292**

**Our local auctioneer Reg Hambley will sell produce etc. after the meal**

## ***Methodist Chapel***

<b><u>Date</u></b>	<b><u>Preacher</u></b>	<b><u>Flowers</u></b>	<b><u>Coffee</u></b>
4 <sup>th</sup> Sept	Mr. Barry Bryne	Sylvia Hambley	Debbie Dawber
11 <sup>th</sup> Sept	Local Arrangement	Judith Heard	Sue Joyner
18 <sup>th</sup> Sept	Mrs Cath Paddon	Sandra Holmes	Roger & Brenda Dunstan
25 <sup>th</sup> Sept	A MacWilliam	Sue Brooks	Joy Moore



## FROM ST JAMES CHURCH

Dear friends,

What a glorious summer we have had! Flower festivals, Revels, Patronal festivals, bands playing, (too) many creams teas and almost wall to wall sunshine. I hope everyone, including our many visiting holiday makers are feeling refreshed and restored as we begin to return to a more usual and routine way of life. And we still have much to look forward to as we enter the month of creationtide with Harvest Festivals and Harvest suppers still to celebrate.

Yet the world is far from perfect; there are challenges we are already coping with and more to come. The consequences of wars and conflict around the world, climate changes and injustice will have impacts both locally and further afield. We know that the cost of living continues to rise and now that the summer months are drawing to a close, we have the challenge of heating our homes and cooking our food in the most cost-effective way.

One of the things that has encouraged me so much during the summer is the way that our communities have been pulling together and laying the foundations for truly loving our neighbours in evermore practical ways.

A community breakfast club at St Andrews, Stratton, a pick up a picnic in Kilkhampton Christian Fellowship, a holiday activity club at Stratton Primary school, the Foodbank and Christians against Poverty at Oceans church (The Venue), Beach Pastors and Street Pastors; our communities all reaching out to help one another.

And that is how we are meant to be. God did not create us to live in isolation or to be independent; that breeds selfishness and greed. Instead, we were created to be relational and to depend on one another and our creator God; breeding selflessness and generosity.

So while the happy memories of summer remain, the getting together with friends and family, the recharging of our batteries during the holidays, the blessings of living in such a beautiful part of the world, let us take them forward with us into the autumn months; let us build on those foundations of serving and helping one another, living and loving our community.

Yours in Christ,

*Rev Teresa*

## FROM KILKHAMPTON CHRISTIAN FELLOWSHIP

Hi everyone, well it's 20 degrees and it's only 10 o'clock at night and they think it's going to be 30 degrees tomorrow but by the time you read this it will be a distant memory and you will be looking out for your woolly jumpers! But what a summer to remember. One for the history books!

The Bible says in Proverbs 23 v 7 "For as he (or she) thinks in his or her heart so are they". Have you ever thought about that?

If you think that you are always going to fail you will make the decision not to try.

If you think that you can't trust anyone you will never make sound friendships or relationships.

In the same way it affects your prayer life, because if you think that you are an insignificant Christian you will pray insignificant prayers, or if you think you are nothing to God you won't pray at all. On the other hand, if you know that you

are God's son or daughter you will pray confident prayers and if you know that what the Bible says about you is true you will pray powerful prayers. Why? Because when you know that you are Princes and Princesses you know that you have direct access to the King of kings, which just so happens to be your Heavenly Father. So, if you want to change your prayer life, see what the Bible says about you, because that's what God feels about you, and it will change how you pray. Guaranteed!

Have a great month and think about me because I'm not looking forward to being cold!

Every Blessing,

Albert Sloman, Pastor

Tel 01288 321073

7 Rosecott Park EX23 9QG

albertsloman@outlook.com

## St James Church Floodlighting Sponsors September 2022

## Diamond Wedding Anniversary

**Phil & Merilyn French**

Congratulations Mum & Dad on your Diamond Wedding Anniversary

on September 22<sup>nd</sup> 2022

With much love and best wishes from Rob, Chris & Michele, Tom & Chloe,  
Lauren & Sam, Ed & Miya.

Xxxxxxx

Remembering with love **Arthur Spry,**

a wonderful Dad, Granddad and Great granddad, who passed away

September 8<sup>th</sup> 2005.

We miss you so much, Lyn, Dave and family.

In loving memory of **Megan Thornton** who will be sadly missed by so many.

RIP you sweet angel.

XXXX

*Church floodlighting sponsors: see information on page 3 of this newsletter*

# KILK KRAFTS

On June 22<sup>nd</sup> Lorna held an art still-life session, with a selection of coloured peppers in different shapes and sizes for people to put into their paintings. Everyone who came enjoyed doing a painting, even those who had never done it before.

The first meeting in July was a talk by Yvonne about her life on the farm in North Cornwall during the 1950s, about which she has written books. The meeting was very well attended and many present could identify with Yvonne's experiences.

At the last meeting before the summer break we welcomed new and old members to try their hand at “Pebble art” painting. We had some stunning pebble art with a few painting their star signs helped by Coralie, while Jan helped others with their chosen designs. Everyone seemed very pleased with the end results. See the accompanying photo for their results – everyone seemed very pleased with what they had achieved.



## KILK KRAFTS SEPTEMBER MEETINGS

Wednesday 14<sup>th</sup> September

Following the summer break, this is an opportunity to bring your own crafts and catch up with a chat and a cup of tea

Wednesday 28<sup>th</sup> September

## Creating harvest theme flowers, with Jan Dickerson

*Venue: Methodist Chapel*

*Time: 2pm to 4.30pm*

*Cost: £2 per session plus small material costs as needed*

Any questions, contact Joyce (01288 321292)  
or Lorna (01288 321870)



**SATURDAY 3<sup>rd</sup> Sept**

**10.30AM - 12.00 NOON at**  
**METHODIST CHURCH HALL**

**A VERY WARM WELCOME TO ALL!**

The Charity for September is Bude Food Bank

**COFFEE, CAKES & CRAFTS**

**Bradworthy Memorial Hall**  
*The Square, Bradworthy, EX22 7SZ*

**Saturday, 29th October 2022**  
 9.00am - 1.00pm

*We would like to invite you to join us  
 for morning refreshments.*

*Enjoy some of our delicious homemade cakes,  
 browse through the various artisan craft stalls,  
 take the opportunity to purchase your Christmas cards  
 and calendars and enter our super prize raffle!*

*Exhibitor fee £10 per table*

*please call 01288 321461 to book a place or for further information*

**Free Entry**

*but donations gratefully accepted at the door on behalf of Holsworthy, Bideford & District Branch*



Registered Charity 203644 (England and Wales SC037711 (Scotland))

**THE BIG BREAKFAST**



**SATURDAY 24<sup>th</sup> SEPTEMBER 2022**

9am - 12 Noon  
**THE GRENVILLE ROOMS**

Fruit Juice - Cereal - Full English Breakfast  
 Toast & Preserves - Tea or Coffee

**Breakfasts- £6.00**

Contact Reg 321340 or Joyce 321292  
 (Booking in advance is most helpful with catering - thank you)

**KILK COMMUNITY LUNCH**

Brought to you by Kilk Coffee & Cakes Team

**2 COURSE HOT MEAL FOR £6**  
 ON  
**Friday 23rd September**  
**At 12.30pm**  
 AT



**KILKHAMPTON CHRISTIAN FELLOWSHIP**

Limited numbers so please book  
 to ensure a place  
 contact 01288 321073  
 transport could be arranged



## TREE BOOK GROUP

### July and August reports

Dorothy Flaxman 01288 359590

#### July: TREGUNNA by CARLA VERMAAT

In a farmhouse on the Camel Estuary, a 5 year old girl finds her parents brutally slaughtered. Fifteen years later the house is deserted and the killing still remains a mystery. Then the body of a 50 year old woman is found on a cliff edge in Newquay. DI Andy Tregunna is faced with the task of leading the investigation, but soon personal matters force him to step back. On compassionate leave and with little else to do than fight his own demons the unsolved case becomes more and more of an obsession to him. He is drawn into a dark world of secrets, lies and revenge and his private investigation collides with his personal life.

The story is set mostly by the sea in Cornwall which makes a change from the usual gritty inner city murders. It took a bit of time to get used to the plot jumping back and forth between two different months, one being the investigation and the other with Tregunna in hospital.

Tregunna has had major surgery, but still manages to be involved in a serious murder investigation. In reality I suspect he would've been on sick leave for a lot longer. Also his sleeping with a witness and breaking & entering a witness's home, although it never came to light, should be a no no for any policeman.

The author admits that English is not her first language and there were a few mistakes, but nothing that shouldn't have been ironed out with careful editing.

The plot was intriguing, and although there wasn't a lot of action it did gather pace quite well and the truth is even more sinister than can be imagined...

#### August: A PLACE CALLED WINTER by PATRICK GALE

A privileged elder son, and stammeringly shy, Harry Cane has followed convention at every step. Even the beginnings of an illicit, dangerous affair do little to shake the foundations of his muted existence – until the shock of discovery and the threat of arrest cost him everything.

Forced to abandon his wife and child, Harry signs up for emigration to the newly colonised Canadian prairies. Remote and unforgiving, his allotted homestead in a place called Winter is a world away from the golden suburbs of turn-of-the-century Edwardian England. And yet it is here, isolated in a seemingly harsh landscape, under the threat of war, madness and an evil man of undeniable magnetism that the fight for survival will reveal in Harry an inner strength and capacity for love beyond anything he has ever known before.

In this exquisite journey of self-discovery, loosely based on a real life family mystery, Patrick Gale has created an epic, intimate human drama, both brutal and breathtaking. It is a novel of secrets, sexuality and, ultimately, of great love.

*A Place Called Winter* grew out of a family mystery which had long puzzled the author. He grew up with stories of his mother's "Cowboy Grandpa" out in Canada, who his brothers variously told him lived in a log cabin, killed and skinned bears with his bare hands, fought with Indians and so on. As scant proof of these stories, the nursery dressing up box contained items of Plains Cree clothing and an extraordinary pair of huge bearskin mitts, which tended to be used by whoever's turn it was to play the Abominable Snowman. It was only years later, quizzing his elderly grandmother about her childhood, that the author made the connection with her apparent fatherlessness. It transpired she was raised by a crowd of aunts and uncles, variously kind, malicious or unthinkingly cruel, because her mother died of breast cancer when she was still a girl and her father... well, her father was rather skirted over as an uncomfortable subject. Later still, nearly three decades after her death, having inherited a chest of drawers packed with family papers, including decades of correspondence between his mother and grandmother, the author came across a little exercise book in which his grandmother had made a start on writing her memoirs before she became either too upset or too confused by dementia to continue.



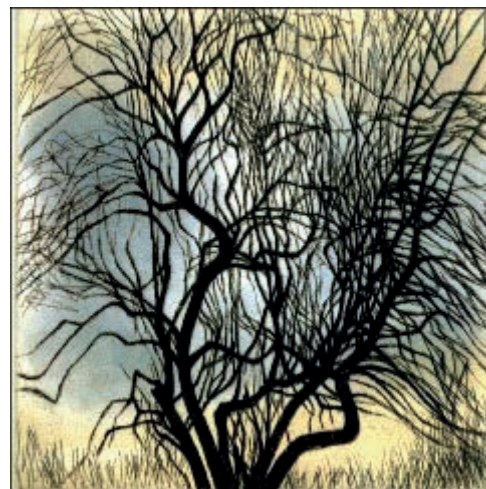


## Bude Look Group

As our focus for July we discussed why so many artists choose to include trees in their work. We shared the work of sculptors like Henry Moore, David Nash, Thomas Heatherwick and Giuseppe Penone who feel an affinity with trees as sculpture in themselves but also to reveal the idea of people's connection with nature...

*"I have always had a great liking for trees, and for tree trunks in particular. I like the bare trees in winter more perhaps than summer trees in full leaf. The trunks of trees have, for me, a connection with the human body – their limbs branch out like arms and legs from the trunk of a figure. For me, too, trees have a definite affinity with sculpture. The immobility of a tree, rooted in the ground, has the kind of stability that I like in sculpture."* Henry Moore

Here In "Trees V, spreading branches" 1979 Henry Moore has concentrated on a tree's details: we look closely at the way its branches spread and feel that we 'get to know' the tree – in the way that we gaze at portraits of people to work out what they might be like. So this is a kind of tree portrait.



*Trees V, spreading branches  
Henry Moore*



*Landscape with Pollard Birches - Vincent Van Gogh*

We also shared how trees can evoke atmosphere or feelings in paintings and we looked closely at the work of Van Gogh, Paul Nash, Peter Doig, Jack Frame and Vanessa Whitehouse.

In fact it was such a rich topic that we have decided to continue our discussion at the next meeting in August.

What do you feel Van Gogh wishes to convey in his depiction of the tortuous branches and solitary figure in "Landscape with Pollard Birches, 1884?"

Bude Look Group meets once a month at the Parkhouse Centre, Bude.

Contact

chris.edwards39@btinternet.com

## Grenville Rooms AGM

Our Annual General Meeting took place on Monday 8 August 2022 and there were 8 Committee members present. All our Committee was re-elected en-bloc, as follows:

Chair	- Reg Hambley
Vice Chair	- Joyce Davis
Treasurer	- Clive Vanstone
Secretary	- Marlene Vanstone

Reg thanked our caretakers, Alan and Tracey Hockin for doing such a good job in looking after the hall. He also thanked the whole committee for their efforts in maintaining the Grenville Rooms to such a high standard. Bookings are now almost back to normal following the pandemic. The building is in a very good state of repair – the team keeping on top of any maintenance issues as they arise, where possible.

Due to the increase in energy costs, we have had to raise our hire charges slightly as below:-  
£20 per session for the main hall, to include the use of the kitchen.

£15 per session for the skittle alley, to include the use of the kitchen.

Crockery, pans etc are available to hire at £10 per session.

To book the Grenville Rooms on a commercial basis, the charge is £50 per session. Anyone wishing to have information on bookings, cost of hire etc., please contact Alan or Tracey on 01288 321710.

Thank you to everyone for your continued support of our village hall.

Marlene Vanstone

Secretary

## **Kilkhampton Parish Council**

Reports of the regular meetings held on

4<sup>th</sup> July and 1<sup>st</sup> August 2022

[www.kilkhampton-pc.gov.uk](http://www.kilkhampton-pc.gov.uk)

### **Council meeting 4<sup>th</sup> July 2022**

**Attendance:** Kingsley Bryant (KB), Keith Ovenden (KO), Tim Cottle (TC),

Ian Heard (IH), Lee Bond (LB), Vinnie James (VJ), Roland Nancekivell (RN), Shorne Tilbey (ST).

**Apologies:** Clive Vanstone (CV).

Mr Reg Hambley began by stated that the Chairman, Cllr Clive Vanstone, had sent his apologies and unfortunately Vice Chairman, Cllr Kingsley Bryant, had only recently returned from being away and was therefore not up to date on all the issues. Cllr Vanstone had requested for Cllr Reg Hambley to take up an acting Chairman role for this meeting. Cllr Hambley asked if all Councillors were happy for this to be approved. All in favour.

**Acting Chairman:** Reg Hambley

**Clerk:** Hannah Collett

Good evening and welcome to all by acting Chairman. Apologies read through.

**Minutes** Approved by all and to be signed by the acting Chairman at the end of the meeting.

**Adopt Code of Conduct**

**Declaration of Interest** None

#### **Public Speaking Session**

Ms Deborah Hockridge wanted to speak regarding her application Number PA22/05541. Not sure if we had any questions. Acting Chairman stated that when this application comes up at the appropriate time, we will all have access to additional drawings received.

Ms Hockridge said she had some drawings if required. Mr Peter Wonnacott felt there was merit in this application. Ms Hockridge brought up an issue some years ago where there had been a break-in at the bungalow and this year there had been another incident of someone in the layby a couple of times and was scary for her. Feels filling this section of land will leave people less exposed and would be nice to have others around to feel safer. An ex-policeman had helped Ms Hockridge out at the time. She feels this is a small scale application. Has been and spoken to immediate neighbours. The two behind are happy. Yet to speak to the people buying the White House. Has spoken to South West Water and they are liaising. Is trying to do everything the correct way. Thanks to Ms Hockridge by the acting Chairman and we would ask any necessary questions at the time of discussing the application.

Mr Ian Mason wanted to bring up concerns on Bunnyhomes and proper affordable housing for local people. Wanted to know if there was anything that could be done to achieve this – happy to help on any committee if needed.

### **Planning Applications**

1. PA22/04943 | The creation of one new temporary modular classroom on a grassed area at the Kilkhampton School. | Kilkhampton Junior And Infant School Kilkhampton Bude Cornwall EX23 9QU. All plans received by all. All knew where this was and no issues. IH moved and KB seconded. All in favour.

2. PA22/05285 | Proposed slurry store | Stursdon Farm Coombe Valley Bude Cornwall EX23 9HU. Just in our Parish. Acting Chairman stated where is was. KB proposed and PS seconded. All in favour.

3. PA22/03328 | Widening of existing access gate to Ashgrove Lodge. | Ashgrove Lodge Thurdon Bude Cornwall EX23 9RZ. Acting Chairman pointed out that this had come in at the last meeting where we refused as they were wanting a separate entrance. We had stated we preferred them to widen the existing one. This is what this is now for. RN moved and TC seconded. All in favour.

4. PA22/05008 | Non-material amendment (NMA1) for various amendments to decision PA19/07812 dated 03.12.2019 | Trepolpen Penstowe Road Kilkhampton Bude Cornwall EX23 9QT. Acting Chairman didn't feel any objections and it has actually already been passed by the planning department due to dates. Reply just to say no objections anyway. All in favour.

5. PA22/05365 | Listed Building Consent for alterations and extension at south west end of building namely- internal and external alterations, alterations to roof of previously extended areas and construction of extension to garage | Priestacott Farm Access To The Old Rectory Kilkhampton Bude Cornwall EX23 9QU AND

6. PA22/05364 | Alterations and extension at south west end of building, internal and external, alterations to roof of previously extended areas and construction of extension to garage | Priestacott Farm Kilkhampton Bude Cornwall EX23 9QU. Read through, one application for work and other application for the building consent due to being listed. Acting Chairman mentioned that he had been and looked at what was going to be done. The roof on the garage is leaking badly so re-roofing when extending. RN moved and IH seconded all in favour.

7. PA22/05541 | Outline application for the erection of up to five dwellings with all matters reserved | Land South Of Down Park Farm Kilkhampton Bude Cornwall EX23 9PA. Acting Chairman said everyone has seen the plan received. Additional drawing for viewing by all and discussed in detail. LB proposed and KO seconded, all in favour as long as highways are happy with the entrance.

8. PA22/02358 – This application has come back to us by the planning department. We had felt it would have been better built closer to the other farm buildings, not that it couldn't be built. More information now received which we didn't have at the time. Land agent as agreed and Cornwall Council are now asking if we agree with their recommendation to approve, if we agree to

*(Continued on page 11)*



(Continued from page 10)

disagree, or take to a committee. Acting Chairman felt we need to agree with the Land Agent and Planning Officer. IH agreed and moved and VJ seconded. All in favour. Clerk to Reply to planning officer.

Acting Chairman stated that anyone who wishes to leave may do so or can stay for the duration of the meeting if they wish.

### **Matters**

1. Car park and Toilets: £146.70 No issues.
2. Lamb Park (Glebe) Development: No further forward. Nothing heard from anyone at all despite further emails from Clerk to Simon Finn. Acting Chairman to speak to Cllr Vanstone.
3. Lamb Park Pre-school Development: Acting Chairman stated that the committee is happy to have a building on the side of the pavilion for the Pre-school. Ongoing with Lamb Park Trust Committee. Need to check on planning requirements and costs involved for different options. VJ pointed out in terms of their numbers, including the footprint area of the kitchen is good for them.
4. Skatepark maintenance: KO had been trying to contact the roofing company – unaware he was on his honeymoon.
5. Photographic Exhibition: This now depends on what takes place at Lamb Park. To be on agenda as ongoing.
6. Other matters arising from the minutes: None

### **Reports**

Footpaths: IH began cuts. Done Barn Lane – there is an issue with the hedge down towards the treatment works. Is overgrown. Do we want it cut? Yes, as it will only get worse. IH to tackle as necessary. PS not heard anything more. M V Plant had to do more than originally anticipated. PS had received an enquiry regarding a padlock on a gate down Aldercombe Lane. IH to look into as cannot have a padlock on.

Playing Fields and Lamb Park: Nothing more to discuss.

School: LB stated nothing to report.

Grenville Rooms: Nothing to report – meeting to be held at some point.

**Month's work** Read through and approved by all.

### **Members**

IH – With the Fete and Jubilee, the carpark has been used even more and has made all the pot holes even worse. Can we sort. M V Plant to be spoken to by acting Chairman.

RN – Mentioned that the Millennium tree needs to be cut back. IH to sort.

KO – had been approached by a couple regarding where a lady had fallen the other day outside the picture shop and hairdressers. There is a dip in the pavement. Can we get highways to look into? Acting Chairman stated this will be discussed amongst other issues shortly.

VJ – asking if Bunnyhomes do anything money-wise when they sell a property, as they have already sold a few. ST to check on this. LB stated the school sections can take around 18 months.

KB – wanted to give congratulations to IH and all for the fete. Mentioned several pot holes and sunken manholes around the village. Can we get Highways to come and walk through the village again. Clerk to email Oliver Jones requesting a meeting. ST also mentioned road markings need attention too. Has chased but can we also.

TC, LB, PS – nothing.

Acting Chairman spoke regarding the Soldier. We have mentioned previously it is starting to corrode. Has spoken to George who made the soldier and he is happy to take back and clean etc or he could make a new one and keep the old one. We would pay the transport only. Would guarantee it would be back by the end of October. TC felt if it's not going to fall apart doesn't it make it more authentic? Would prefer to keep the one we have, IH also. Acting Chairman to sort for it to be cleaned and original one returned to us. All in agreement.

### **Correspondence**

Letter had been received from Ms Joyce Paddon – read through by acting Chairman. Querying the dip in the pavement and asking for it to be sorted, asking for a pedestrian crossing by bus stop at the Spar and also by the church and butchers. Felt yellow lines would not work as the traffic speed would increase and also the shops would suffer. Alan Somerfield has also mentioned this matter. Clerk to email Oliver Jones on these issues too.

All received email from Ms Cull. We could forward this to Oliver Jones also and ask what he would suggest as our Highways contact. As Councillors we are all concerned but are unable to do a lot about the traffic. KO said noticed some residents parking half on the pavement corner by the Spar. IH felt there was a car there all the time. KO asked if we could put something there? Email Oliver Jones on this issue also. ST mentioned he has taken these issues up with Oliver Jones and Scott Mann. It's a case of technicalities and costs. Acting Chairman mentioned that if you have a crossing you have to have lines either side. LB has asked for a crossing by the School but the zig zag lines began going round the bend. Could Oliver Jones look here also. KB felt we could ask for residents to be more considerate when parking their vehicles through the village.

**Finance** Read through by Chairman. Invoices to be paid: £63.00 S Gifford: £29.62 Bridgmans: £6.70 Bridgmans: £2,654.40 M V Plant. LB Moved and IH seconded. All in favour to be paid.

Thanks to all by acting Chairman and declared the meeting closed.

***See pages 12 and 13  
for the report of the August  
Parish Council meeting***

## Council meeting 1<sup>st</sup> August 2022

**Attendance:** Kingsley Bryant (KB), Tim Cottle (TC), Reg Hambley (RH), Ian Heard (IH), Lee Bond (LB), Vinnie James (VJ), Roland Nancekivell (RN), Shorne Tilbey (ST).

**Apologies:** Keith Ovenden (KO), Phil Sluggett (PS).

**Chairman:** Clive Vanstone (CV)

**Clerk:** Hannah Collett

Good evening and welcome to all by Chairman.

Apologies read through.

Chairman began by congratulating the England Women's football team for winning the European Championships last night.

**Minutes** Approved by all and to be signed by the Chairman at the end of the meeting.

**Adopt Code of Conduct**

**Declaration of Interest** None

**Public Speaking Session**

The Chairman pointed out that there were a few people here to speak. Starting with Mr Zerafa. Here to talk about building site off Penstowe Road called Ridgeway. Mr Zerafa is building three homes for him and his family. When he had bought the plot there was meant to be no road surface on there. The owner then put a surface down. He wasn't aware at all and was told to use Priestacott Road instead for access. 12 lorries have gone through, one of which was videoed – which is illegal. In the future there will be a maximum of 3-4 lorries needed to access and the bulk of the work has been done. Mr Zerafa stated it's a public road and no reason why they can't use it. Felt they had actually kept it cleaner than when they found it. Mr Zerafa has spoken to Reverend Richard Ward-Smith and he is fine with everything.

Felt they are looking at the wrong people. The Chairman stated Mr Zerafa's sign is what has generated the complaint. Can see Mr Zerafa's point but unfortunately there is nothing the Parish Council can do. Mr Zerafa mentioned that they have put a covenant on the land behind. The Chairman reiterated that the Parish Council doesn't have any jurisdiction but glad Mr Zerafa came and made his point. The resident was concerned it would be trucks on a daily basis. This has been explained not to be the case and hopes they can sort out between themselves.

Moved over to Mr Adam Sillifant. Explained that his application had been refused by Cornwall Council and then we had supported their decision. His planner stated he couldn't do anything further without our help. The Chairman stated we had agreed to disagree with the planning department and the final say is always theirs. Mr Sillifant was here for advice from the Parish Council. Mr Sillifant felt a Q plan wasn't financially viable. Stated it's a lean-to shed that needs to be knocked down. Just wants a little sensible building. Mr Sillifant said he

would stipulate that if sold it could only be sold to locals. KB asked what the architect suggested. Apparently told it was up to the Parish Council to agree for it to go through. ST mentioned a similar case in Truro. A Parish Council is only a consultee. The power is with the County. ST suggested speaking to his architect to find out the reasons for the refusal. ST happy to help out when necessary.

No further speakers.

### Planning Applications

1) PA22/05374 | Replacement of existing agricultural building with new, to include solar panel on roof. | Bryder Farm Stibb Level Stibb Bude Cornwall EX23 9HP. Plan discussed. RH said same layout – just putting new one with solar panels. The Chairman questioned why this had come in. RH mentioned that this is what had been advised. All seen KB moved and IH seconded. All in favour.

2) PA22/06283 | Works to trees in a conservation area (TCA), works include felling of Elm tree | Anvil Cottage Kilkhampton Bude Cornwall EX23 9QR. RH stated this is to be agreed between the owner and the conservation department. Just tidying up. RN moved and VJ seconded. All in favour.

### Matters

1. Car park and Toilets: £144.60 No issues.

2. Lamb Park (Glebe) Development: LB had received the lease draft from Mrs Helen Bond. Mrs Bond went direct in the end as nothing further had been received from Mr Simon Finn. Mrs Bond now sending the lease to her legal contact at the Council. Clerk to email Mr Finn to explain we no longer require their services on this matter, and if they have any paperwork, for it to be returned. Diocese now dealing with Mrs Bond Direct.

3. Lamb Park Pre-school Development: Correspondence had come in. Mrs Hockeridge made a valid point that the Pre-School shouldn't have been evicted due to the money that was used to put the pre-school on site at the time. The Chairman stated unfortunately it's nothing to do with this Council. VJ felt it was worth looking into as they shouldn't have been asked to leave by the school. The Chairman said a plan had been to put a building on Lamb Park. RH asked if ST had a new set of plans done? No by ST. Mrs Bond is putting new plans in. The Chairman said it's for information only. We can agree in principle. Felt for the pre-school and everything they have gone through. A prefab in Lamb Park for the pre-school is what is being looked at. TC has spoken to a few people and asked what they were thinking. VJ said new plan needs to be looked at to be in line with the original. VJ hopeful for a "corridor" so still one building. ST said happy to help with the plans.

*(Continued on page 13)*



(Continued from page 12)

4. Skatepark maintenance: KO not here. RN said there had been some vandalism on the skatepark. Writing on top section. IH to look at.

5. Naming of land East of Rosecott Park: Emails received from Emma at Bunnyhomes suggesting names for us to approve. The Chairman said the field has always been known as Westlakes and the larger field known as Lords Meadow. The Chairman said there was a house there for many years. ST said they have also written to him. The Chairman suggested to write to say Westlakes and Lords Meadow. Would like something around these.

6. Other matters arising from the minutes: IH mentioned the state of the carpark. RH said it is all in hand.

### **Reports**

Footpaths: IH mentioned he is almost done. Hedge to be done also as per last meeting.

Playing fields and Lamb Park: Mr Gerald Strong is working on our behalf. VJ and Mr Strong had meeting with play equipment people and were supposed to receive a quote, but nothing as yet.

School: Closed till September.

Grenville Rooms: AGM Monday 8<sup>th</sup> August.

**Month's work:** Read through and approved by all.

### **Members**

TC – asked if we have asked Mr Gifford to go around the skatepark on pickups? No. Can we ask him to include all of Lamb Park. TC to speak to Mr Gifford.

RN – just wanted clarification on a plan at Pigsdon Quarry – the amount of waste there is huge. ST said it is permitted development, so they can store it there. RH reiterated that if it is materials in the quarry then it is ok to be stored there.

KB – Meeting with Mr Oliver Jones on Friday. Jubilee Close needs to be looked at also. RN asked who is liable for the maintenance of the tarmac by the end of Jubilee Close? The Chairman felt it is private. We can check on Cornwall interactive.

The Chairman mentioned that people may have noticed low water pressure in the village. There are many leaks at Penstowe. South West Water taken to reducing pressure overnight in our area to prevent leaks. Someone is supposed to be looking at it. Recently in the middle of the night there has been no pressure at all. SWW have this matter in hand.

ST – on 23<sup>rd</sup> June the Lead Councillor attended Bude. Was very busy. Bude have tried to instigate a questionnaire to see if it wants a referendum. Not too well supported or many replies received. Instead of having a leader it would be that they would have a Mayor. Nothing would change, but it would bring a lot of money to Cornwall for things which they

currently cannot claim for in terms of finance. Work in progress. ST mentioned on 9<sup>th</sup> July he went to a Police Crime Panel meeting - report was given for their work this year. Doing a great job directing money towards us. They did raise an issue with Neighbourhood Policing as we only have two officers and they are shared with Launceston. Will be taking this up with others. The Chairman said we have had a few representatives in the past but the system never got set up as it was supposed to.

One good thing, ST mentioned, was local operations called Scorpion took drugs dogs into Budehaven and it was completely clean. When talking about money – shared prosperity fund is available for claiming for projects. ST will send form to clerk once received. The Chairman stated you need someone with the time etc to drive these projects.

ST mentioned that on the 10<sup>th</sup> November, Bude police station will re-open with manned staff. The Blue phone on site is a hot line to immediate response. LB felt strange that they are wanting a Mayor, when they have just been trying to remove the one from Bristol. ST stated every member will have a vote.

IH, LB, VJ, RH - nothing.

### **Correspondence**

Traffic Control email will be discussed with Mr Jones on Friday. The Chairman stated we have done a lot with bollards, lines etc but there is always too much traffic. KB said Camelford been reduced to 20 miles an hour. Could we do the same or add a traffic light system. ST felt good. The Chairman suggested we bring this up at meeting on Friday also.

Anti-social behaviour email received from Ms Sharon Derosa. All read. The Chairman said we have no say at all unfortunately. We have individually got involved in the past but it isn't in our jurisdiction. We can only direct them to the people that can help. VJ said she had been involved in a previous case and mentioned to a police officer and the lady must keep calling the housing people. LB felt the police know who they are. Clerk to forward email to ST and he will take it up with the police. Clerk to email Ms Derosa back to state passed to County Councillor and he will take up to police at a higher level that we can.

**Finance** Read through by Chairman. Cheque received from Mr Strong on behalf of the Lamb Park Trust giving £1293.77 back to the Parish Council from the Jubilee Celebrations. Invoices to be paid: £63.00 S Gifford; £495.00 Archies garden services; £240.00 PKF Littlejohn (audit). All in favour to be paid.

Date of the next regular parish council meeting: 5<sup>th</sup> September 2022, 7.30pm. Grenville Rooms.

Thanks to all by Chairman and declared the meeting closed.

# UNCLE ERIC'S PAGE

## In North Cornwall

The rugged cliffs rise sharply up above the golden sand  
The stony strata twists and folds, as shaped by nature's hand  
Great spiny ridges start from cliffs, like dragons' backbones raw  
Protruding from the sandy beach across the wave-washed shore

The tide recedes a long way out before the water's deep  
A way to walk, if you would swim, or merely plunge and leap.  
The rising tide comes racing in at quite a rapid speed  
So if you brought some picnic things you'd better take good heed!

The beach is backed by sandy dunes; steep paths rise up, which lead  
To rows of huts, which you can hire, when a "beach base" you need  
And further on a restaurant where you can drink and eat  
A short stroll leads you to the town, with bargains you can't beat!

If you long for peace and quiet, far from the "madding throng"  
Just take the lovely coastal path and gently stroll along  
You come across some sandy bays, with steep paths leading down  
With pebbly shore and sand galore, a "gem" in Neptune's crown.

Not only here, but East and West, North Cornwall's joy and pride  
Those seaside cliffs and widespread bays, washed clean by daily tide  
We could keep it for just ourselves, it really would be nice  
We proudly share with folk who come, this South West paradise!

*Eric Latter*

## Can you solve these anagrams?

They are all tall buildings all over the world. Some of them were the tallest at the time when they were built. When there is more than one word in the answer, the number of letters in each word is shown, e.g. (4,7).

- 1 WOLF FREE TIE (6,5)
- 2 I TRIED A PLUM BEE STING (6,5,8)
- 3 DELETE HEN (3,6)
- 4 RESEW ASTOR (5,5)
- 5 HERD TASH (3,5)
- 6 JAB A FIR HULK (4,7)
- 7 SEEK TROTH TOY KEY (3,5,7)
- 8 HER THIN KEG (3,7)
- 9 WRECK A LOOP BLOT (9,5)
- 10 WEST PORTER WINS A TON (8,4,6)

## What am I?

A place of entertainment, rebuilt in London. The answer is preceded by the word "The".

My first is in acting and also in stage  
My next's in theatrical, never in rage  
My third is in oral and bold and object  
My next is in building but not architect  
The fifth is in enactment and also in role  
The next is in actor and never in soul  
This one is in hallways and also in house  
The eighth is in audience, never in knaus  
The next is in platform but never in round  
The 10<sup>th</sup> is in cast and actor, not sound  
This one is in critic but never in cue  
My lasts in expert and also in new  
My whole is a place where you get a good view

What am I?  
The Globe Theatre

- 10 Petronas Twin Towers
- 9 Blackpool Tower
- 8 The Gherkin
- 7 The Tokyo Skytree
- 6 Burj Khalifa
- 5 The Shard
- 4 Sears Tower
- 3 The Needle
- 2 Empire State Building
- 1 Eiffel Tower

**ANSWERS**