



# KILKHAMPTON PARISH NEWS

[www.kilkhampton.news](http://www.kilkhampton.news)

February 2022

## Kilkhampton Parish News AGM

Thursday 24<sup>th</sup> February 2022, 7pm, at Kilkhampton Christian Fellowship

All are welcome to attend.

### *Welcome...*

*The first issue of 2022 - Happy New Year everyone! Spring seems to have arrived early with daffodils starting to bloom, and hopefully this heralds a more optimistic year!*

*Thanks to everyone for their contributions - articles and notices are always welcome, anything of interest and any public event, no matter how small, it's worth adding it in to let everyone know. I continue to hear how happy many people are to see the Parish News back again, which is lovely and a real boost to the team behind the scenes making it all happen!*

---

### *Inside this issue...*

*Page 6 - Kilk Crafts reports on its December and January activity, plus a look ahead to sessions in February*

*Page 7 - a report from the January Probus Club meeting*

*Page 8 - Ian and Sally Maddock continue to contribute their regular 'Nature Table' article - now with a Shropshire flavour since their recent move!*

*Page 9 - cheese meatballs feature as this month's recipe - keeping it simple. Also our regular 'coffee and cakes' and 'christian fellow ship lunch' notices are here.*

*Page 10 on wards - reports from the December and January parish council meetings*

*Page 13 - an article from the 'Look Group', our local art appreciation group, featuring 'The Bloomsbury Set'*

*Page 14 - not to be forgotten, Uncle Eric's page!*

## St James the Great, Kilkhampton

<b>Priest-in-Charge:</b>	<b>Reverend Teresa Folland</b>	01288 352599
<b>Retired priest</b>	<b>Reverend Richard Ward-Smith</b> Barn Farm, Kilkhampton EX23 9RH R.wardsmith@btinternet.com	01288 321991
<b>Safeguarding Officer:</b>	<b>Mr. Kevin G. McGrath</b> Frank's Folly, The Square, Kilkhampton EX23 9QQ	01288 321277
<b>Churchwardens:</b>	<b>Mr. Kevin McGrath</b> <b>Mr. Luke Francis</b>	As above 01288 321270
<b>Lay-Chair of the PCC:</b>	<b>Mr. Tony Davis</b> Highfield House, 1 Baileys Field West Street, Kilkhampton EX23 9QE	01288 321292
<b>Treasurer to the PCC:</b>	<b>Mr. Peter Hobbs</b> Wrasford, Kilkhampton EX23 9RL	01288 321551
<b>Secretary to the PCC:</b>	<b>Reverend Richard Ward-Smith</b>	01288 321991
<b>Organist</b>	<b>Mr. Luke Francis</b>	As above
<b>Bell Tower Captain:</b>	<b>Mr. Tony Davis</b> Highfield House, 1 Baileys Field West Street, Kilkhampton EX23 9QE	01288 321292
<b>Flower Coordinator:</b>	<b>Mrs. Jeanette Norman</b> Meadowside, Penstowe Road, Kilkhampton, EX23 9QT	01288 321404
<b>Electoral Roll Officer:</b>	<b>Reverend Richard Ward-Smith</b>	As above

## Kilkhampton Methodist Chapel

<b>Church Stewards:</b>	<b>Mr. Reg Hambley</b> The Hill Park Centre, Kilkhampton EX23 9QQ <b>Mr. John Brooks</b> Killarney Park, Youlstone EX23 9PX <b>Fiona Cleave</b> Higher Pigsdon Farm, Launcells EX23 9LQ	01288 321340
<b>Treasurer:</b>	<b>Mr. M. Metherell</b> Stapleton, Whitecroft Way, Kilkhampton EX23 9RE	01288 321248
<b>Room Bookings</b>	<b>Contact Reg Hambley on the above number</b>	

## Kilkhampton Parish News Editorial team

Chair: Barrie Rose [barrierose22@btinternet.com](mailto:barrierose22@btinternet.com) 01288 321117

News editor: Jill Rodgers [jill@kilkhampton.news](mailto:jill@kilkhampton.news) 01288 321144 or 07747 006601

Advertising editor: Adam Lee [adam@kilkhampton.news](mailto:adam@kilkhampton.news) 07747 758704

Advertising manager: Martin Cross [martin@kilkhampton.news](mailto:martin@kilkhampton.news) 01288 321806 or 07484 147056

## EDITORIAL



Hello everyone,

Happy New Year, and I hope Christmas was everything you would want it to be - so nice not to get a last-minute lockdown this year!

I have been reflecting on the Parish News team and how seamless the process is - we're not in touch with each other every day, but are there to support each other and also always 'turn up' and get on with our jobs when needed. Here's how the process works:

Martin Cross (the advertising manager) and myself (editorial editor) tend to be the first port of call. People contact us with enquiries to advertise (Martin), or with articles and notices to include (me). Tracey Smith is also on the 'receiving' team in terms of the floodlighting page - she joined us post-lockdown to replace Ursula Edwards who has done a great job for many years. Tracey collects the floodlighting contributions from the Spar and also deals with any queries from contributors, then presents me with a comprehensive list every month to include in the next issue.

On the advertising side, Martin agrees what can be done and then hands over to Adam who will work directly with each advertiser to finalise their advert and edit it into the existing pages in time for the next issue. On the editorial side, I add in the regular features, again liaising with contributors as needed, and then add in all the notices and articles to fit the remaining space.

The next stage is printing - Martin does this along with Steve Finnegan, who moved in to Thyme cottage in late 2021 (interesting that Ian Maddock used to live there, and used to edit the adverts!). Martin and Steve liaise and make sure all pages are printed in good time.

Next is 'collating and stapling' which happens on the last Thursday of each month. It runs like clockwork - Marie Trowbridge took over from Rita Cann to lead the team post-lockdown, although Rita remains involved with the distribution. The team turn up early in the morning - sometimes up to 10 or 12 people - and quickly collate and staple, usually finishing within a couple of hours. At this point, the distribution team arrive - they take their allocated number of copies and deliver them to the households and shops in their 'round'. For those not around on a Thursday morning, theirs are left in St James Church, picked up within a day or two and distributed. All the people involved in this process support each other, cover for others when on holiday, and are a real reflection of the spirit of the community.

And last but my no means least are Barrie, our chair, and Peter, our treasurer. Barrie's jobs are very varied in terms of liaising with outside organisations, ensuring the printing equipment and paper are available when needed, and almost anything else that needs doing! Peter as always keeps an eye on the finances but also is a valued contributor of ideas in our meetings.

I hope that gives you an idea of the organisation and commitment of so many that make KPN magically appear on your doorstep!

See you next month,

*Jill*

### ST JAMES CHURCH FLOODLIGHTING SPONSORSHIP

#### PLEASE NOTE NEW ARRANGEMENTS:

Please clearly write or type your notices for the church floodlighting page, put them in an envelope with the £5 fee, and give them in at the Spar by the 11<sup>th</sup> of each month.

If you have any queries, please contact Tracey Smith at [kilkchurchlights@gmail.com](mailto:kilkchurchlights@gmail.com) or phone her on 321432 or 07747 520459

Cheques should be made payable to 'KILKHAMPTON PCC'.

Please use the contact details on the opposite page to enquire about advertising (Martin), submit or amend your advert (Adam), or send in submissions for the editorial page (Jill). We are happy to be contacted in the first instance and we're happy to accept notices of events and news items. Adverts need to be submitted by 1<sup>st</sup> of the month for the following month, and editorial submissions by 12<sup>th</sup> of the month.

The opinions expressed in this newsletter are not necessarily those of the editor. The editor cannot be held responsible for the content of any articles, notices or other submissions to this newsletter. The editor cannot guarantee inclusion of articles or notices submitted for publication, and the layout and size of all articles (unless paid for) is at the discretion of the editor.

# **Kilkhampston Church Services**

## ***St James Church***

### **Sunday 6<sup>th</sup> February**

**11am Holy Communion** With Reverend Teresa

Welcomers: Jennie and Joyce. Reading: Joshua 1:1-9. Reader: Ian.

### **Sunday 13<sup>th</sup> February**

**11am Renewal of Wedding Vows** With Mark

Welcomers: Rachel and Lynne. Reading: Song of Solomon 2:10-13. Reader: Rita.

### **Sunday 20<sup>th</sup> February**

**11am Holy Communion** With Reverend Teresa

Welcomers: Tracey and Myra. Reading: Genesis 2:4b-9 and 15-end. Reader: Peter.

### **Sunday 27<sup>th</sup> February**

**11am Morning Worship** With Richard Painter

Welcomers: Rita and Margaret. Reading: Exodus 34:29-end. Reader: Gillian.

**If anyone is unable to make their appointed date please arrange a replacement**

### **9am daily: morning prayer on Zoom**

**ZOOM** Meeting ID 818 0754 3068 Password 342 493

or via telephone 02030512874 or 02030515237

Everyone welcome to drop in on any day

---

## ***Methodist Chapel***

<b><u>Date</u></b>	<b><u>Preacher</u></b>	<b><u>Flowers</u></b>	<b><u>Coffee</u></b>
6 <sup>th</sup> February	Mr. Paul Wreyford	Judith Heard	Judith Heard
13 <sup>th</sup> February	Mr. Kevin Hogarth	Sandra Holmes	Fiona Cleave
20 <sup>th</sup> February	Mr. Clive Smale	Sue Brooks	Sandra Jones
27 <sup>th</sup> February	Rev. Joy Wilson	Brenda Dunstan	Pam Metherell



## FROM ST JAMES CHURCH

Firstly, we extend our good wishes to Reverend Teresa, who has succumbed to the covid virus and is presently in enforced isolation. It is not really surprising having been amongst Parochial Church Councils and congregations of five churches throughout the two years of this terrible pandemic. By the time you read this, God willing, she will be back to whatever normal is available to us all! Best wishes also to Reverend Richard who is taking a well-earned break until Easter.

Christmas is behind us, we are into 2022, the birds are singing, the snowdrops, crocii and daffodils can't wait to let us know that Spring is on the way, which means that a whole new Church season of special services and events will be coming too! Our Candlemas lunch on January 30th started us off, numbers were limited to accommodate current restrictions, but many of our patrons have expressed the view that "The show must go on" - two years of suppression is quite enough.

Plans are in hand for Shrove Tuesday pancakes before we start into Lent (watch this space), and we are hoping to celebrate the festival of St Piran in a rather special way – again, details when arrangements are finalised (Covid notwithstanding).

Please come along to St. James where you will find a warm welcome. Newcomers to the village (and there are many!) and visitors are just friends we have yet to meet!

With best wishes to you all from Tony Davis (Lay Chair of the Parochial Church Council).



## FROM KILKHAMPTON CHRISTIAN FELLOWSHIP

Hi folks, it's me again!

The Bible talks about Heaven being like a "pearl of great price" or value (Matthew 13 v 45 & 46) i.e. Heaven is to be valued and much sought after. So, it got me thinking about what do we value? Our property? Our car? Our computer? And definitely our phone?!!

We spend a lot of time in our lives striving to get something of value, and there is nothing wrong with people trying to better themselves. More and more we are being pushed into a material way of thinking, where what we possess is the most important thing. Yet Jesus said we should place Heaven, and us being there, above everything.

If we are not careful we start to devalue things that we shouldn't, such as TIME. I'm always running out of time, which is really bad, but I really value it when people give me a bit of their time. So, today, stop and give someone five minutes of your time and you will give them something of great value.

The Bible also says "where your heart is, there is your treasure also" so, where is your heart today? Is it in your possessions or the people God has placed around you, because what you treasure you go after.

That's why Jesus said Heaven is like something of great value, so that we can try and attain it. People seem to think nowadays that Heaven is a birthright but the Bible does not say that. Jesus said it was to be sought after and attained.

One of the good things about Covid is that it has brought it home that we are not promised life on earth, but the Bible says that if we value Heaven above all else it is a promise. "And he (the thief) said, "Jesus remember me when you come into your kingdom". And he (Jesus) said to him "truly I say to you. Today you will be with me in paradise." (Luke 23 v 42 & 43).

Albert Sloman, Pastor

Tel 01288 321073

7 Rosecott Park, EX23 9QG

albertsloman@outlook.com



## St James Church Floodlighting Sponsors February 2022

### TREVOR BELL

In loving memory of Trevor Bell who passed away February 5<sup>th</sup> 2004.

Always in our thoughts.

Love Celia, Ann, and Kevin.

Remembering my husband **ARTHUR HARRIGAN** on our Wedding Anniversary,  
5<sup>th</sup> February.

Love you always. Edith, Marie, David, Andrew and Mark

### Announcements

**GILBERT & VANSTONE** on the 37<sup>th</sup> Anniversary of the formation of their business  
on 16<sup>th</sup> February 1985. Always happy to support the floodlighting fund.

*Church floodlighting sponsors: see information on page 3 of this newsletter*

### KILK KRAFTS

It seems a long time ago now, but the Kilk Krafts group met twice in December - once to make Christmas wreaths which was a lot of fun, and the second meeting included making a variety of Christmas tree decorations as well as a quiz and mince pies.

Following the Christmas break, the first meeting of 2022 was 12<sup>th</sup> January, a very well-attended session where Lorna took everyone step-by-step through creating their very own watercolour masterpieces. As you can see from the photographs of the finished results, there was a variety of style and lots of amazing talent in the room!

See the notice on this page for what's coming up in February...



### KILK KRAFTS

Second and fourth Wednesday of every month, 2 - 4.30pm

Methodist chapel rooms

£2 per session including refreshments

(Some sessions will have small additional costs for materials used)

#### February 2022 activities:

**9<sup>th</sup> February:** 'Iris-folding' card-making

**23<sup>rd</sup> February:** How to make mini cheese souffles

Young and old,  
all are welcome,  
dip in and out as you wish!

Any questions, please contact either  
Joyce on 01288 321292  
or Lorna on 01288 321870



## ***Probus Club Meeting report, Thursday 6 January 2022***

The Probus Club meets on the first and third Thursday of each month at The New Inn, and it is open to retired or semi-retired men. It has no political, charitable, religious or masonic ambitions and its sole aim is to provide entertainment and enjoyment for its members.

The Ladies Probus Club meet at the Brendon Arms, Bude.

In December, the Club were very pleased to have a talk by one of our own members, Derek Pearce of Kilkhampston who happily spoke about his 22 years serving Queen and Country in the Royal Navy. He spoke of his training as a shipwright and then the ships that he served on, the very many places that they visited throughout the world and also about his time in the Falkland Isles. A very interesting talk which seemed more like a Cooks Tour of the World. It was really appreciated by the members present and he received a good round of applause with grateful thanks from the Chairman on behalf of the members.


On Thursday 16<sup>th</sup> December the club had its Christmas Lunch and sadly numbers were lower than in previous years with some members not wishing to venture out due to the problems involved with the pandemic. Even so the New Inn provided an excellent Christmas meal for those in attendance with plenty of humour and conversation during the lunch.

On Thursday 6<sup>th</sup> January we had our first meeting of 2022 and we took the opportunity of having a short A.G.M where the chairman, Keith Taylor gave his report on last year's activities and then presented a report on the state of our finances. As we had not charged a membership fee for 2021, the members unanimously voted a fee which was slightly higher than that of 2020. The Chairman thanked them for the confidence shown in the Club Officers who were re-elected unopposed.

Our speaker for this meeting was that popular former Portreve of Holsworthy Mike Johns, who spoke about the Holsworthy Court Leet and its recorded history which went back to the 12<sup>th</sup> Century. The origins though were probably Saxon. He spoke of its duties and the personalities who are elected to the various Offices. During his explanation he described the Court going in procession around the town to test the products of the various Ale House, the weighing of the bread in the bakers to check that there is no cheating, the Beating of the Bounds whereby the Court walk from border stone to border stone around the Parish and of course the very popular 'Pretty Maid' who is elected once a year. An excellent talk by Mike Johns. He was thanked for explaining about this ancient institution which gave us an insight into possibly one of only six left in this country.

*Keith Taylor*

**KILKHAMPTON CHRISTIAN FELLOWSHIP**




**8<sup>th</sup> February**

**FROM 7-9pm**

**IT'S**

**TABLE TENNIS TUESDAY**

**A FUN WAY OF KEEPING FIT!**



# **NATURE TABLE**

## **FEBRUARY 2022**



### **AN OCCASIONAL CONTRIBUTION - NATURE NOTES FROM ABROAD**

#### **Happy New Year!!**

Dear Kilkhampton. Missing the coast so much, the beautiful beaches from Widemouth to Hartland but especially Duckpool and Sandymouth. Also missing our friends and acquaintances who have been so much part of our lives for 35 years. Feeling terrible for all those friends and neighbours we never said good bye to in the final chaos of moving on a soggy Kilk day. Really Sorry. Not missing Kilk's winter (and summer) misty, wet days or the traffic but missing the mild and Sunny Days that Cornwall and the west coast can be blessed with. Much colder here But Also drier. Win some, lose some. Just had our offer accepted on a house in the Small town of Ellesmere, famous for its lakes and canals. Ellesmere, Shropshire We are living in a Static on a small (empty now) family site near Whitchurch, surrounded by trees and fields. The hastily set up bird feeder is already over-populated but within the first week of living here we had dunnock, blue tits, great tits, long tailed tits, coal tits, greater spotted woodpecker, redwing, fieldfare, robins, starlings of course but only one or two at a time, blackbirds, thrush and a rogue squirrel. There's a field 25 yds away we view through the back bay window and we are treated to a constant display of of about 400 lapwing, chasing, wheeling and swooping over us with an hour or two feeding then aerial displays again. These birds are becoming scarce and are on the danger list as 'at risk'.



Cheshire and this part of Shropshire were heavily glaciated and east of here lies the Shropshire plain. The landscape is fairly level until the Pennine ridge rises up. The glacial scouring created hollows which now water filled are called meres and Mosses. This is reflected in place names like Delamere, Brown Moss, Ellesmere and White Mere. This was also the cradle of the Industrial Revolution (Ironbridge only 40 minutes away) so the landscape is crisscrossed by canals. Salt is still mined and place names like Northwich, Middlewich, Nantwich and Droitwich the salt mining towns and the buildings associated with salt processing were called wic. There are many parks, lakes and nature reserves around us here and the wildlife is rich and diverse. Best of all we are within an hours drive of nearly all our families and can now spend Sunday morning on a local football pitch watching Sam play with Frodsham Town whilst we freeze to death! With love and best wishes, Sally and Ian Maddock.





# Recipe Corner

with Jay Wong

## Cheese meatballs

Serves 4

*A delicious and easy to make dish, with most of the ingredients readily available in Kilk! Enjoy.*

### Ingredients

100ml extra virgin olive oil  
½ onion, diced  
3 cloves garlic, crushed  
1 tsp fennel seeds  
500g loose sausagemeat  
500g minced beef  
150g mature cheddar cheese  
1kg passata  
800g fresh pasta (tagliatelle or spaghetti)  
A few handfuls of fresh parsley  
Parmesan to serve

### Method

Heat all the oil and fry the onion, garlic and fennel seeds for 5-10 minutes. Put this mixture aside to chill.

Combine the sausagemeat and minced beef, and add in the chilled mixture from earlier.

Dice the cheddar into medium-sized chunks, around 5mm in diameter, and combine with the meat mixture. Shape the mixture into golf ball-sized balls – it should make around 16 balls, four per person.

Warm up the passata in a pan. Fry the meatballs in either a dry pan or a very small amount of oil to brown the outside, no more than 5 minutes, then add into the warmed passata. Put the lid on and cook on a medium heat for 10 minutes (the passata should be gently simmering). Take the lid off and simmer for a further 10 minutes. Take the meatballs out and keep them warm whilst you simmer the passata and reduce to almost a rich, thick tomato paste. Cook the pasta quickly for 2 minutes, and whilst this is cooking chop the parsley so that it's nice and fresh. Drain the pasta and mix into the passata, the sauce should stick to the pasta. Put the pasta onto serving plates with the meatballs on top, sprinkle over the chopped parsley and shave fresh parmesan over the top.

STALLS

KILKHAMPTON  
COFFEE &  
CAKES

**SATURDAY 5<sup>th</sup> February**  
10.30AM - 12.00 NOON at  
**CHRISTIAN FELLOWSHIP HALL**

**A VERY WARM WELCOME TO ALL!**

The charity this month is  
Bude Food Bank

STALLS

**KILK COMMUNITY LUNCH**

Brought to you by Kilk Coffee & Cakes Team

2 COURSE HOT MEAL FOR £6

ON

**Friday 25<sup>th</sup> February**

**At 12.30pm**

AT

KILKHAMPTON CHRISTIAN FELLOWSHIP

Limited numbers so please book  
to ensure a place  
contact 01288 321073  
transport could be arranged

## **Kilkhampston Parish Council**

Report of the regular meetings held on 6 December 2021 and 10 January 2022

[www.kilkhampston-pc.gov.uk](http://www.kilkhampston-pc.gov.uk)

### **6 December 2021 meeting**

**Attendance** Kingsley Bryant (KB), Reg Hambley (RH), Keith Ovenden (KO), Tim Cottle (TC), Ian Heard (IH), Phil Sluggett (PS), Roland Nancekivell (RN).

**Apologies** Lee Bond (LB), Shorne Tilbey (ST), Vinnie James (VJ).

**Chairman:** Clive Vanstone (CV)

**Clerk:** Hannah Collett

Good evening and welcome to all by Chairman.

**Minutes** Approved by all and to be signed by the Chairman at the end of the meeting.

### **Adopt Code of Conduct**

**Declaration of Interest** Chairman stated the proposed new "Dispensation" rule on Pre-School application.

### **Public Speaking Session**

One public member attended but not hear to speak

### **Planning Applications.**

1. PA21/07805 Proposal: Variation of condition 2 of decision PA18/06225 dated 17/12/2017 Proposed residential development of 34 houses including 10 affordable housing and associated works including the provision of an internal accessway, the provision of community parking spaces, public open space and on-site parking provision. Location: Land North East Of Morwenna House Kilkhampston Bude Cornwall EX23 9RF Applicant: Hayley Wray. Read through by Chairman. RH stated that this has all been dealt with already. Got planning permission for original. Chairman has their contact details if anyone has any issues at the site. The Chairman mentioned that the owner will be putting effort into the lane. Clerk to email Case officer to state that the Council have looked at the application but our comments have already been acknowledged. RN asked if only one access. Yes.

2. PA21/10231: Variation of condition 1 of decision PA16/05589 dated 7 October 2016 (Removal of condition 2 in relation to decision notice: PA11/01652 dated 12/05/2011 to allow all year use of the yurt structures) East Thorne Kilkhampston Bude Cornwall EX23 9RY. Read through. RH not heard anything. KB said it appears they want all year use. KO said upgraded yurts to be all year round. PS moved and IH seconded. All in favour.

3. PA21/09062 Proposal Change of use of part of visitor attraction into residential dwelling. Location Brocklands Adventure Park Kilkhampston Bude Cornwall Applicant Mr Dennis Vanstone Shorne Tilbey Associates Ltd. Read through. Building used to look after lake. TC feels once Barn Lane is worked on, it will open up other issues. IH stated it's an historical lane. If the hedge gets taken down it opens up a lot. KO stated he didn't want the lane opened up. PS stated that the hedge is in a conservation area and shouldn't be taken down. A previous application has been refused. PS said nothing has changed. Lane is too narrow. KB felt the same. Planners have been to site and seen building and access. Highways are not in favour of the access. TC said health and safety issues. If anything caught fire

or anything else happened – emergency services wouldn't be able to get through. PS said not even a transporter size vehicle can get down. If more than one vehicle were to try to get through it wouldn't be possible. No turning or pull in points. IH proposed refusal on grounds of access, historical piece of land, hedge is in a conservation area, no access for emergency services. KO seconded. All in favour of refusal. Clerk to email planning officer directly.

4. PA21/09312 Proposal Proposed conversion and alteration of barn to dwelling (previously approved under PA21/04517) together with extended garden area and associated infrastructure Location Easting Barn Lower Scadeghill Kilkhampston Bude Applicant Mr Herman Sundberg. The shed and ground were sold to Mr Sundberg and he wants to extend the car parking area and then build a wall around it to tidy things up. KB said not changing the building. Only altering the outside area. Original plan approved on Class Q. Just a wall and altering garden. Footprint of building is exactly the same. KB proposed and IH seconded. All in favour.

5. PA21/10712 Proposal Permanent agricultural workers dwelling Location Land SE Of Darracott Farm Kilkhampston Bude Cornwall Applicant NJ, JA & SN Granger. Chairman stated this is near Darracott Farm. RN had reservations as down as a workers dwelling but doesn't look like it, as it's so large. RH proposed and PS seconded. All in favour.

6. PA21/10532 Proposal Erection of a detached single storey building to provide educational facilities for Kilkhampston Pre-School Location Kilkhampston Junior And Infant School, Pre School Nursery Labernum Terrace And Brentspool Hill Kilkhampston Bude Applicant Mrs Helen Bond Kilkhampston Pre School (Secretary). No issues. All in favour. PS proposed and RN seconded.

7. PA21/10603 Proposal The creation of concrete bases for the siting of static caravans and associated decking. Creation of a gas compound, electricity substation and foul water pumping station. Associated landscaping, drainage, access and infrastructure work. Location Pentire Coastal Holiday Park Stibb Level Stibb Bude Applicant Park Leisure 2000 Ltd. Chairman stated this is the application coming in after our talks with the applicants at October meeting. KO asked why not stated how many caravans the bases are for. Discussed talks from the October meeting. No numbers just red outline. PS asked if we should have more information. KB confirmed that on the plans it says it's for the original 50 that the applicants mentioned to us. PS asked where sewerage is being pumped to. Chairman said unsure. RN not in favour. Feels we have lots of sites already. KO proposed we state reasonably happy with the initial 50 but have concerns on the extra sites they talked about. TC seconded. All in favour apart from RN.

8. PA21/11104 Proposal Barn conversion to single bedroom dwelling Location Uplands Road From Youlstone Ham Bridge To Uppacott Cross Kilkhampston Bude Applicant Vanessa Vanstone & Kelvin Davis. Read through. Discussed in detail. There are two conversions there already. RH said it's tin sides with galvanized roof. Chairman said it comes into over development of site and unsuitable building. Chairman also

*(Continued on page 11)*

*(Continued from page 10)*

concerned as to why a one bed as it's a fair size. RN moved and IH seconded on over development of site and the building not being suitable. All in favour of refusal.

### **Matters**

1. Car park and Toilets: £101.50 taken. No other issues.
2. Lamb Park Development: Plans all in. Waiting on Solicitors.
3. Precept: Chairman said we have 56 more properties paying council tax this year. If we keep the precept the same at £26000 it should give a reduction of 9%. TC proposed and IH seconded. All in favour.
4. Land North West of Aldercombe Cottages: Apparently they have the incorrect site. KO stated they are still looking into this. RH said 3 sites in total. The caravan they are happy with. Still ongoing with other sites and issues. All in hand with them. Further site visits to be done.
5. Other matters arising from the minutes: None

### **Reports**

Footpaths: PS said he has emailed Katie Joyce but just had automated reply. Gate had been found. IH to collect. PS mentioned there were complaints regarding path by the sewer fence. TC asked if we can just put some hardcore down. RH proposed get County to look at. PS to contact. PS has already asked who is legally responsible if any accidents occur. No reply received yet. Chairman stated all future deliveries to be sent to Gilbert and Vanstone shop. TC asked PS to emphasise that this area is well used and people are slipping over all the time.

Playing Fields and Lamb Park: Chairman confirmed we had received the safety inspection report. LB has requested an idea of costs to put right. Chairman asked if we need to do anything immediately. KO said they hadn't come up with anything unexpected. 2 items need fairly urgent attention. Roundabout and safety chain to basket swing. KO to look into. There are new regulations but anything there previously are OK. KO to go through the report and look into all necessary. Lease still going ahead.

School: LB not here.

Grenville Rooms: Nothing to report

**Months work** Read through and approved by all.

### **Members**

TC – asked if we need to advertise for the carol service on Facebook? Has been in parish magazine. IH to sort. TC has been to the London Inn regarding this event. Regarding Code of Conduct training - to be done within 6 months of being elected and then every 2 years. KB stated we also must refrain from discussing planning in public. Chairman found the training interesting and TC felt very informative. We should all have separate email for Council business only. To be on agenda for January.

PS – Trees diseased that have been cut down, just past the refuse site towards Stratton – feels someone could go over the side as it's now so open. RH said this stretch of road is being looked at. Clerk to email Oliver Jones and ask if something is being done to make it safe.

IH – Mentioned whilst driving at Thorn Hill there is a SLOW sign which is really faint. Oliver to be emailed. East Road at the Junction also has pale give way signs.

KB – Soldier is still outside. Chairman said we normally put it back into the Church when we put the Christmas trees up.

Chairman – mentioned that an email from Maxine McKenzie regarding burial records for a John Daniel had been received. Clerk to email her back and state that we are investigating it and will come back to her. Chairman to speak to Michael Heard.

Chairman went to the Remembrance Service organised by Mr Luke Francis and would like a letter of thanks sent and show appreciation for all he has done. The services at the church raised £4000.

There is a rusting issue on the Soldier. RH spoke to George and he will come and have a look at and take it back if necessary to re lacquer it. Too busy at the moment but will sort. If left too long apparently we won't be able to do anything with it. RH to get indication of costs when he can come.

Chairman said with regards to the defibrillator we are looking at putting at North Close – someone has got a telephone box for sale for £1300. Quote for the wall to be built etc was £880. Chairman feels the box would be a good idea. Defibrillator phone box to be on agenda. KO said it does have a wooden door. KO to look at and see if suitable. These cost approximately £2500 online to buy.

KO, RN and RH – Nothing

### **Correspondence**

Ms Nicola Cull emailed to check we had looked at map she sent regarding footpaths.

Luke Francis had requested to deal with the wreaths and put onto unmarked graves.

**Finance** Read through by Chairman. Invoices to be paid: £255.60 Bridgmans – Apparently this has been invoiced incorrectly, clerk to inform Bridgmans. £108.00 Acuiti; £192.00 Merry Harriers; £98.00 Mat Sampson; £81.00 S Gifford. All in favour to be paid.

Date of next Parish Council meeting: 10<sup>th</sup> January 2022, Grenville Rooms, 7.30pm.

Thanks to all by Chairman and declared the meeting closed.

### **10 January 2022 meeting**

**Attendance:** Kingsley Bryant (KB), Reg Hambley (RH) Keith Ovenden (KO), Tim Cottle (TC), Ian Heard (IH), Lee Bond (LB) Vinnie James (VJ).

**Apologies:** Roland Nancekivell (RN), Shorne Tilbey (ST), Phil Sluggett (PS).

**Chairman:** Clive Vanstone (CV).

**Clerk:** Hannah Collett

Good evening and welcome to all by Chairman.

**Minutes** Approved by all and to be signed by the Chairman at the end of the meeting.

**Adopt Code of Conduct**

**Declaration of Interest** None

*(Continued on page 12)*



*(Continued from page 11)*

**Public Speaking Session** One public member (Mr Jason Wong) attended to mention about the footpath at Rosecott. Is it a public footpath? As it needs repairing. A lady fell down recently. Yes it is. Will look into and try to sort something regarding whose responsibility.

### **Planning Applications**

1) PA21/11104 Proposal Barn conversion to provide self-contained annexe accommodation. Location Uplands Road From Youlstone Ham Bridge To Uppacott Cross Kilhampton Bude Applicant Vanessa Vanstone & Kelvin Davis. Chairman said this was dealt with last time. We only received application for the annexe, nothing before that. Chairman felt we shouldn't have a problem with an annexe, wording had been misunderstood previously. IH moved and KB seconded. All in favour but to stipulate that a condition of it not being used as a holiday let needs to be in place.

2) PA21/12381 Proposal Variation of condition 1 in respect of decision CC/NC/2004/00433/OCM [NC72.ENV(1)] dated 31/01/2006 thereby extending the time for the continuation of operations beyond 30 September 2023 for a further 5 years. Location Pigsdon Quarry Launcells. Bude Cornwall KO moved and RH seconded. All approved, no objections.

### **Matters**

1. Car park and toilets: £85.80 taken. No other issues.
2. Lamb Park Development: Nothing heard. Huge backlog per VJ. Helen Bond is chasing constantly. VJ has meeting next week in relation to the project.
3. Personal council email addresses: Chairman said we had been advised to have our own email for council business by Code of Conduct training. Chairman asked Clerk to look into the hosting company and what they do with regards to these addresses and whether we can move to another host/web designer.
4. Code of Conduct: KB and VJ booked in for the next meeting. Clerk to request two further spaces.
5. Other matters arising from the minutes: None

### **Reports**

Footpaths: IH said down Penstowe a lady had complained that she couldn't get through the footpath. Trees been cut down and have been covering the pathway for a couple of months. Lots of branches etc. Penstowe side by Coombe, but other side is also blocked apparently. IH to have a look and let Chairman know for information etc.

Playing Fields and Lamb Park: Chairman stated there is a meeting to be held in the next couple of weeks. Need some movement on building and play equipment etc. LB will be pulling away from his involvement. Said we are liable if anything the playground inspectors have mentioned isn't dealt with. KO listed all repairs he has done and is about to do. LB said the safety inspector wanted to meet before quoting for the works. Chairman said we need to pay the inspection fee. (it is on agenda for payment).

Chairman mentioned that Lamb Park Trust manage this for the Parish Council and have a lots of others interested in what is

needed. Pre-school, School etc. VJ asked if others knew what they wanted. Chairman stated yes. Member of Lamb Park is needed to be on a sub-committee. VJ feels we should get a few people together to sort what's needed. KO feels large climbing frame, small climbing frame and large swings to be replaced/go. Rest is all OK. Chairman said need to sort via Lamb Park Committee to run with it. Clerk has also been asked and agreed to be the Clerk for Lamb Park Trust. KB to check who did Morwenstow's playground recently. LB said he would get the inspectors quote.

School: LB said the school was heavily hit by COVID. Plus normal winter illnesses. Getting better this month. Staff being able to return etc. Headmaster is grateful for all the support they receive. Scott Mann is at school on the 14<sup>th</sup> if anyone has anything to put to him, to let LB know.

Grenville Rooms: RH said drains have been sorted. Rooms are always clean and pre-school is working out fine. Meeting to be held soon.

**Months work** Read through and approved by all. All Ok. Chairman mentioned that if we discuss anything on Whatsapp we need to include on agenda/minutes.

### **Members**

RH – ST had gone to a meeting this evening in Bude. Stibb road was on the agenda and they are extending the 30 mile hr which we have talked about previously. RH said they should let us know the outcome of the meeting.

Chairman said we were emailed a survey from Police and Crime Commissioner – LB and VJ had completed it. If others wish to, please do.

Chairman also said funeral provisions email received – KB has made a note of the first meeting date. Stated the Parish's legal obligations. Chairman read through the highlighted points and KB clarified how things work.

Chairman said Health Works Cornwall email has been forwarded to all.

Also had email about electric charging points for information. Chairman feels we could look into this at some point to put charging points on the carpark area. KO felt not a large enough supply at the minute. Chairman feels we will need to look at.

Also mentioned was the email from Maxine McKenzie who was looking for burial records. Michael Heard had contacted her directly and informed nothing in our Parish records. In correspondence with her.

Chairman mentioned the Queen's 70<sup>th</sup> Anniversary reign. 2<sup>nd</sup>, 3<sup>rd</sup>, 4<sup>th</sup> and 5<sup>th</sup> June. Had been approached by Mr Luke Francis who feels we should have a church service, cream tea, BBQ, band, child and adult sports and fireworks. IH said last time we just did a cream tea for all. Chairman feeling we could suggest he comes to the next meeting to discuss. TC mentioned mugs were given out at the Silver Jubilee. 3<sup>rd</sup> June is the official day. 5<sup>th</sup> seems to be for street parties. Chairman to speak to an engraver for suggestions on coins/medals etc. VJ feels we could take out some of the suggestions. IH to speak to bands.

*(Continued on page 13)*



(Continued from page 12)

KB said the bank holiday has moved to the Thursday (2<sup>nd</sup>). VJ felt we could split different parts over the village, i.e. pre-school do something, football club do something etc. Chairman to speak to Mr Francis regarding attending February meeting.

Chairman mentioned the kiosk for defibrillator. KO stated he had looked at the one offered to us – couldn't see all sides or how decent the door was. Chairman feels we should move forward with this. Will look much better than a wall. VJ said Clerk should hear from Western Power. Chairman felt the base was already there. KO to ask for kiosk to be move out for full viewing.

RH mentioned TC and CV had email from Solar Panel stating money is available for applications by 24<sup>th</sup> February. £30000 available now. KO asked if allowed to apply. TC confirmed Parish Council are not allowed to apply. Chairman said maybe ask for the Play area?

TC, IH, KO, VJ, LB, KB – Nothing

#### Correspondence Dealt with

**Finance** Read through by Chairman. Christmas carol donations to be given to Citizens Advice Bureau as always. They used to send us breakdowns of the services throughout the village. Clerk to sort.

Letter to London Inn to be sent with thanks for soup etc at Christmas Carol Service.

Invoices to be paid: £195.50 K&J Building (Repairs); £31.58 D&I Bridgmans (Toilet supplies); £90.00 Alvian (playground inspection); £612.00 M V Plant (Drainage issues); £140.00 Gilbert and Vanstone (Lights etc); £300.00 Archies Garden Services (Cutting etc); £63.00 Mr Gifford (Litterpick). All in favour to be paid.

RH mentioned that comments were on Facebook about how good the village had looked with lights etc. TC had been informed that people had felt we could have done more. Agenda for September to discuss in detail Christmas lighting for 2022.

Date of the next regular Parish Council meeting: 7<sup>th</sup> February 2022, Grenville Rooms, 7.30pm start. Thanks to all by Chairman and declared the meeting closed.

Climate change	12
What am I?	11
11 HURRICANES	10
10 FOREST FIRES	9
9 FLOODING	8
8 WILD FIRES	7
7 AVALANCHES	6
6 TSUNAMI	5
5 LANDSLIDES	4
4 MONSOON	3
3 TWISTERS	2
2 EARTHQUAKES	1
1 THUNDERSTORMS	
Answers	
ANSWERS	

### **BUDE LOOK GROUP REPORT – THE BLOOMSBURY GROUP**

The **Bloomsbury Group** – or **Bloomsbury Set** – was a group of associated English writers, intellectuals, philosophers and artists in the first half of the 20th century, including [Virginia Woolf](#), [John Maynard Keynes](#), [E. M. Forster](#) and [Lytton Strachey](#). This loose collective of friends and relatives was closely associated with the [University of Cambridge](#) for the men and [King's College London](#) for the women, and they lived, worked or studied together near [Bloomsbury](#), London. It was said that "although its members denied being a group in any formal sense, they were united by an abiding belief in the importance of the arts." Their works and outlook deeply influenced [literature](#) and [economics](#) as well as modern attitudes towards [feminism](#), [pacifism](#), and [sexuality](#).

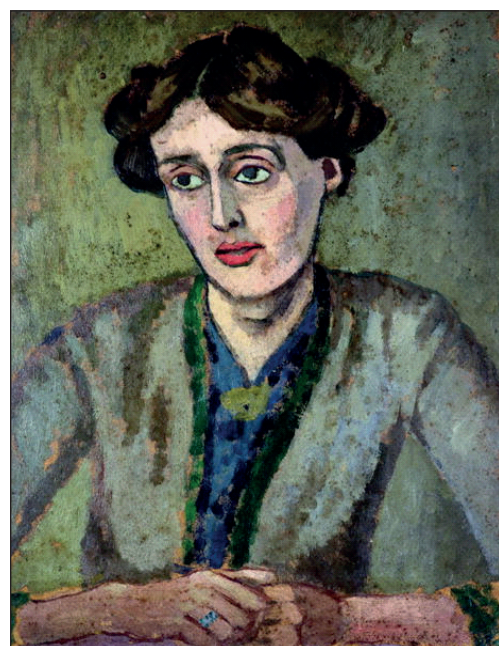
A well-known quote, attributed to [Dorothy Parker](#), is "they lived in squares, painted in circles and loved in triangles".

#### **Bude Look Group - The Bloomsbury Artists**

This month we focused our discussion on the artists in the Bloomsbury Group: Vanessa Bell, Duncan Grant, and Roger Fry. We also included Simon Bussy, Dora Carrington, Sir Matthew Smith and sculptor Frank Dobson who were also closely linked to this extraordinarily talented group of friends.

Roger Fry had a huge influence on the art world when he organised two exhibitions in 1910 and 1912 that introduced the work of Matisse, Van Gogh, Cézanne, Gauguin, Van Gogh, Dérain, Matisse, Seurat and Picasso. He coined the term Post Impressionists. We particularly liked his painting of Virginia Wolfe. We thought we could see the influence of Matisse in this work. Do you like it?

Bude Look Group meets once a month at the Parkhouse Centre. Contact [chris.edwards39@btinternet.com](mailto:chris.edwards39@btinternet.com)



# UNCLE ERIC'S PAGE

## A few of the images this country has to offer

Beech forest on the Chiltern Hills, in autumn, russet gold  
And as you walk among these trees the air is crisp and cold  
These ancient trees with their smooth bark stand out both grey and bold  
Your feet disturb the forest floor, beech mast and rich leaf mould

To walk astride the Southdown Hills upon a summer's day  
The crisp green turf, close-cropped by sheep, crossed by an ancient way  
The sun beats down, the air is still, the path leads us astray  
The panoramic views abound, they stretch far far away.

Where ancient Kings once rode to hunt the herds of Fallow deer  
Through forest glade midst dappled shade until they galloped clear  
Wild herds of horses roam about (of us they show no fear)  
One thousand years it first was called "New Forest" - it's still here!

Wide sweeps of sand in the North East, lapped by the cold white foam  
The windswept sky, where seabirds fly, a lonely place to roam  
Where Bishops ruled from castles strong against the Viking hordes  
Whose longships terrorised the countryside, with axes and with swords

The rugged cliffs of far South West withstand Atlantic's wrath  
Past sandy coves and steep ascents we tread the coastal path  
You find those fishing villages where men go out to sea  
Where seagulls cry in clear blue sky above the Harbour quay

And further on you find wide sands backed by sand dunes green turf  
Where giant waves from out to sea encourage folk to surf  
Great fishing harbours lie ahead on coasts both North and South  
With tourist haunts, marinas too, by many a river's mouth

East Anglia lies far away, a place of wide wide skies  
Essex and Suffolk, Norfolk too, have much to give surprise  
Sun shines on sweeps of golden sands some busy, some remote  
With Fens and Broads, water galore, for holidays afloat

I could go on, so much to tell about our countryside  
So much to choose, just take your pick, let England be your guide!

*Eric Latter*

## Can you solve these anagrams?

They are all natural disasters. When there is more than one word in the answer, the number of letters in each word is shown, e.g. (4,7).

- 1 NORM SHED TRUST
- 2 QUASH RETAKE
- 3 SET WRITS
- 4 NO MOONS
- 5 LENDS A LID
- 6 I AM NUTS
- 7 A VANE CLASH
- 8 SEW FIR LID (4,5)
- 9 I FLOG DON
- 10 FROST IS FREE (6,5)
- 11 I SEAR CHURN

*You can find all the answers to the anagrams and 'What am I?' on page 13!*

## What am I?

A natural event which affects us all

My first is in cloud not in rain nor in hail  
The next is in flood and in rail and in pail  
The third is in island not ocean nor sea  
This one is in modern and methods and me  
The fifth is in autumn not winter nor spring  
The sixth is in unit and also in thing  
This one is in everyone not found in crowd

The eighth is in chanting but not in aloud  
The next is in heaven and haven and home  
The tenth is in wander and also in roam  
The next is in nightmare not dream nor distress  
The twelfth's in foreboding, we're in a 'right mess'  
My last's in endeavour each day brings us more  
My whole is life-threatening, the prospect is poor!